

Anemones

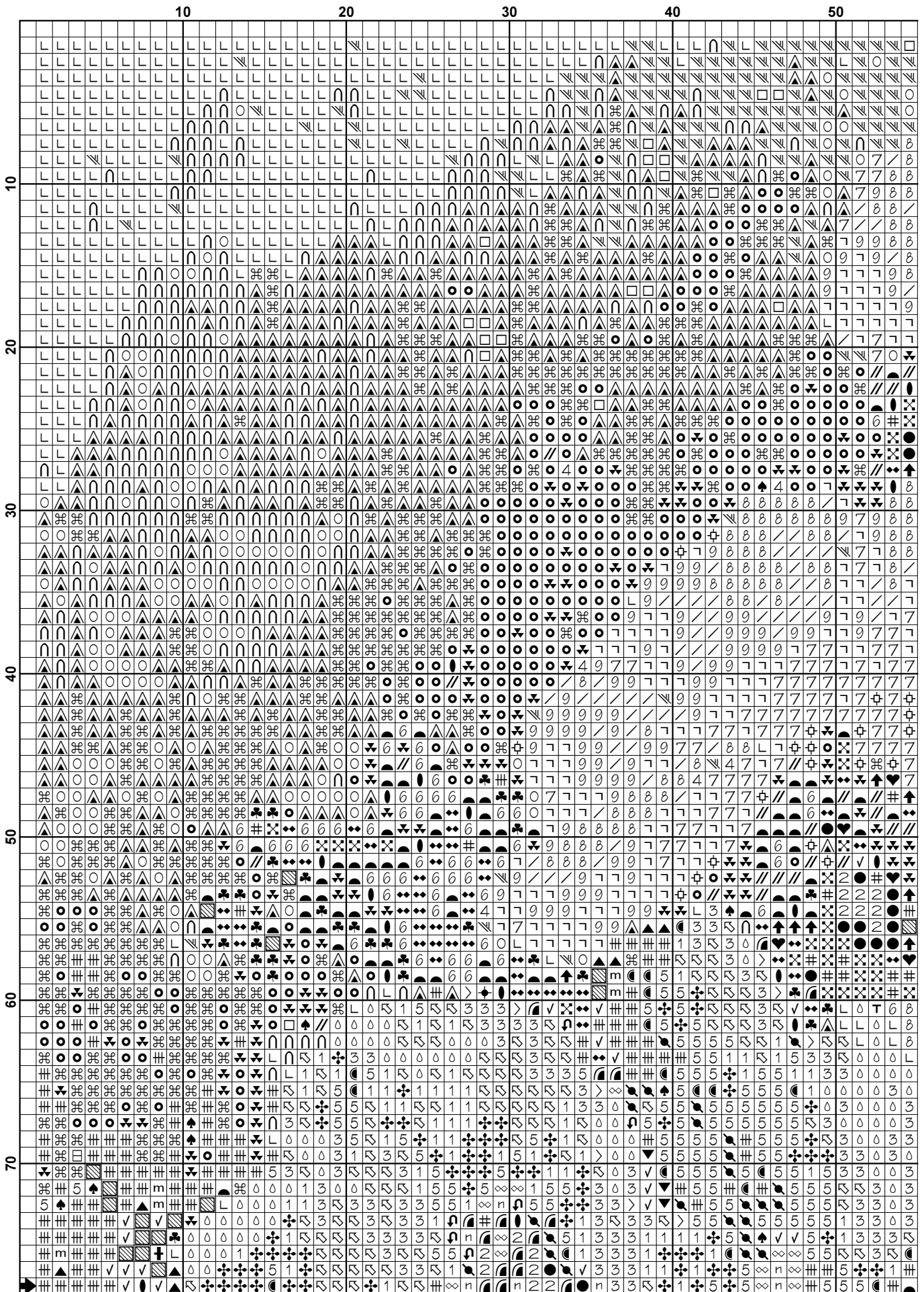
www.freecrossstitchonline.com

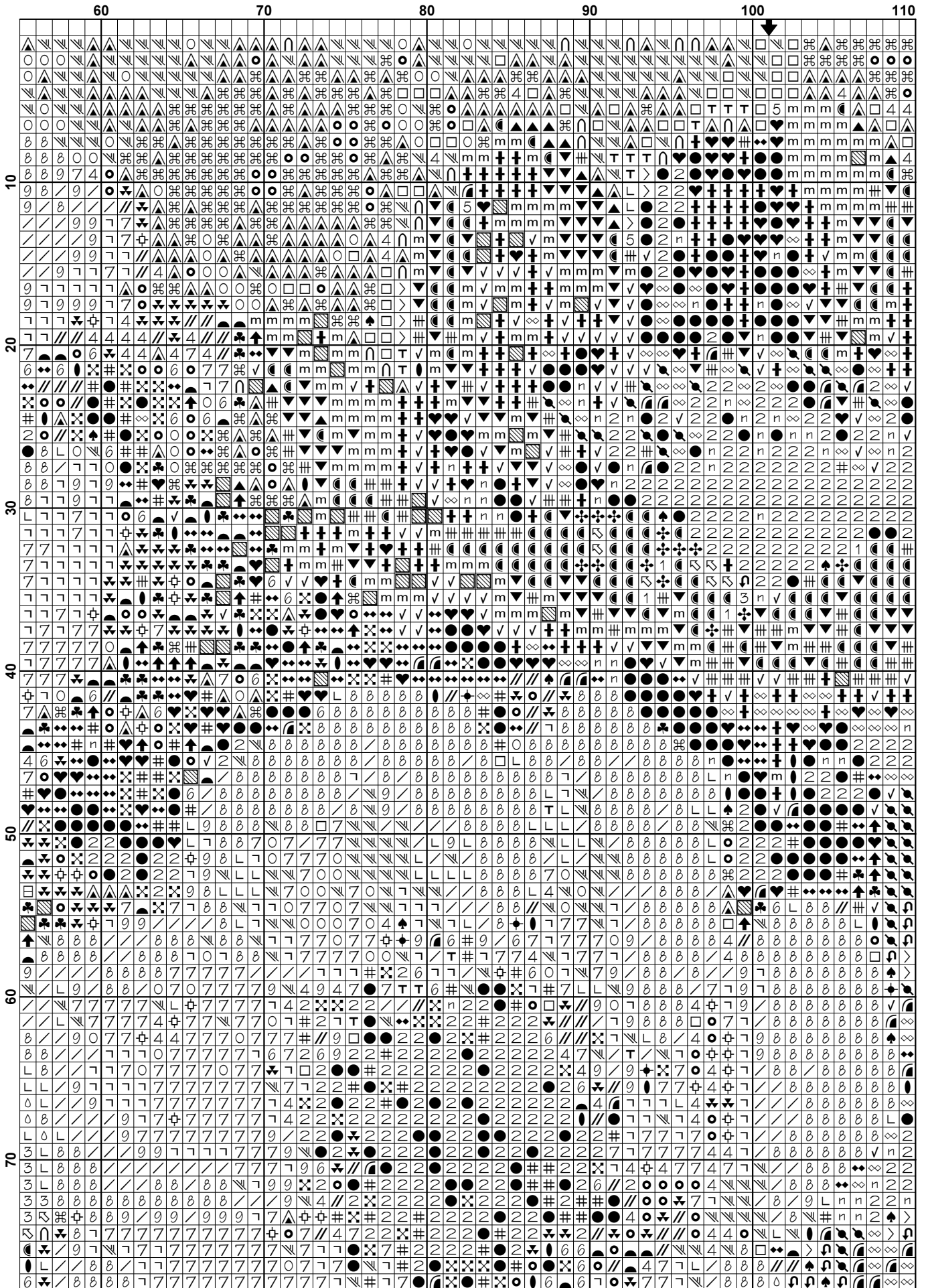


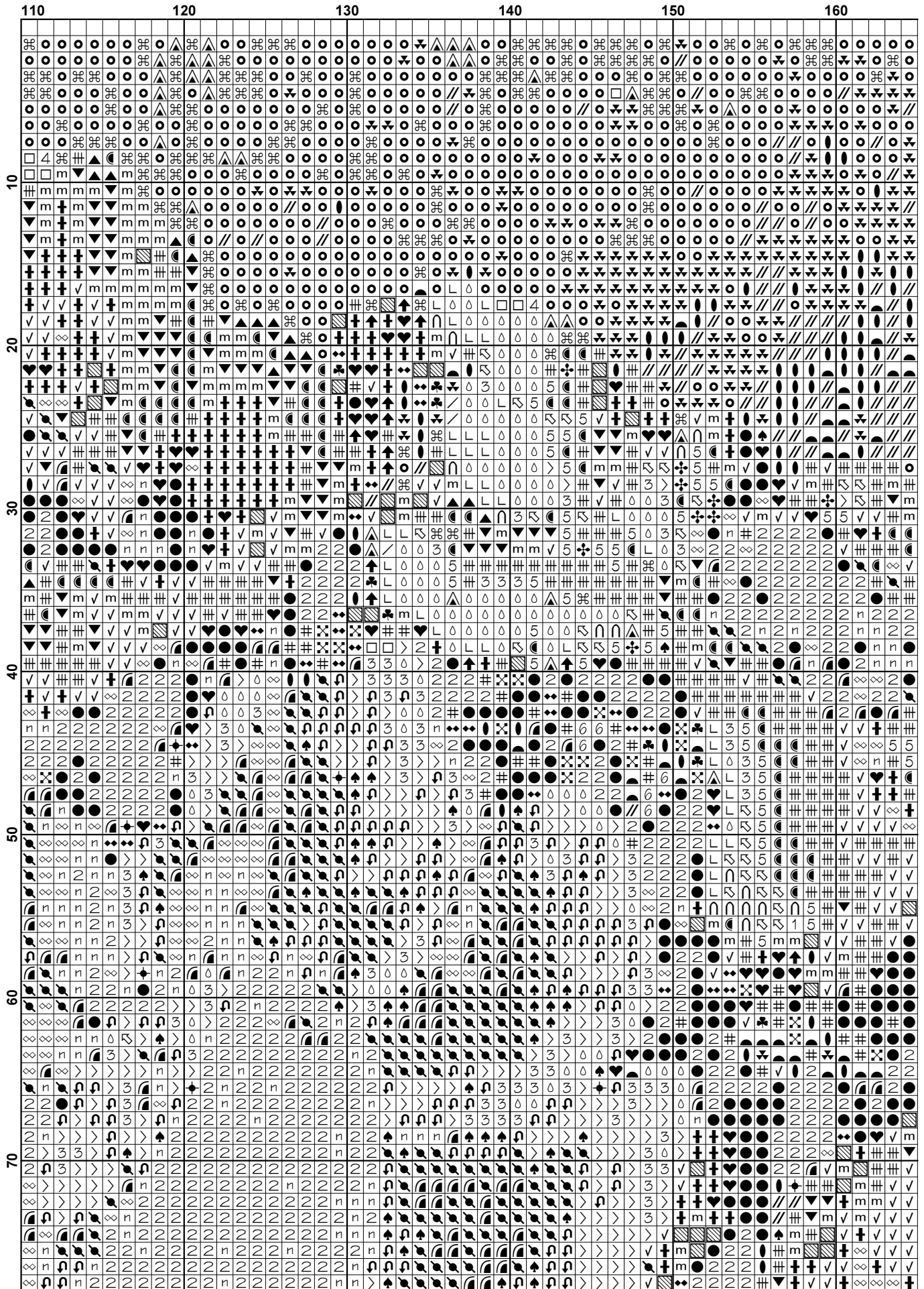
This pattern is offered totally free from Free Cross Stitch Online. We offer one new free pattern on our website every Friday. Please see www.freecrossstitchonline.com

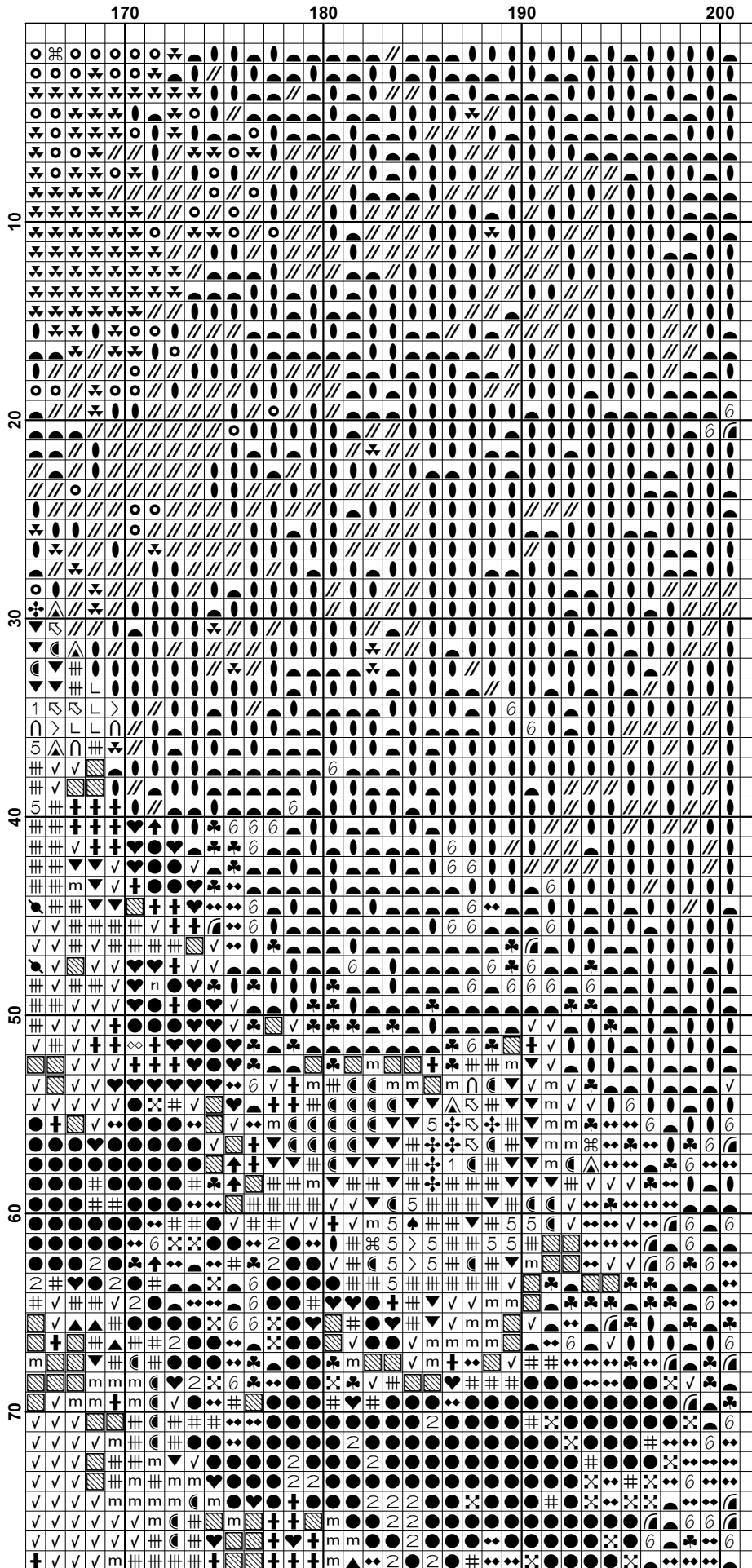
Please feel free to pass this pattern around to anyone for free. You cannot sell these patterns by themselves, however you can put the pattern together in a kit form and sell the kits or you can sell the completed stitched item.

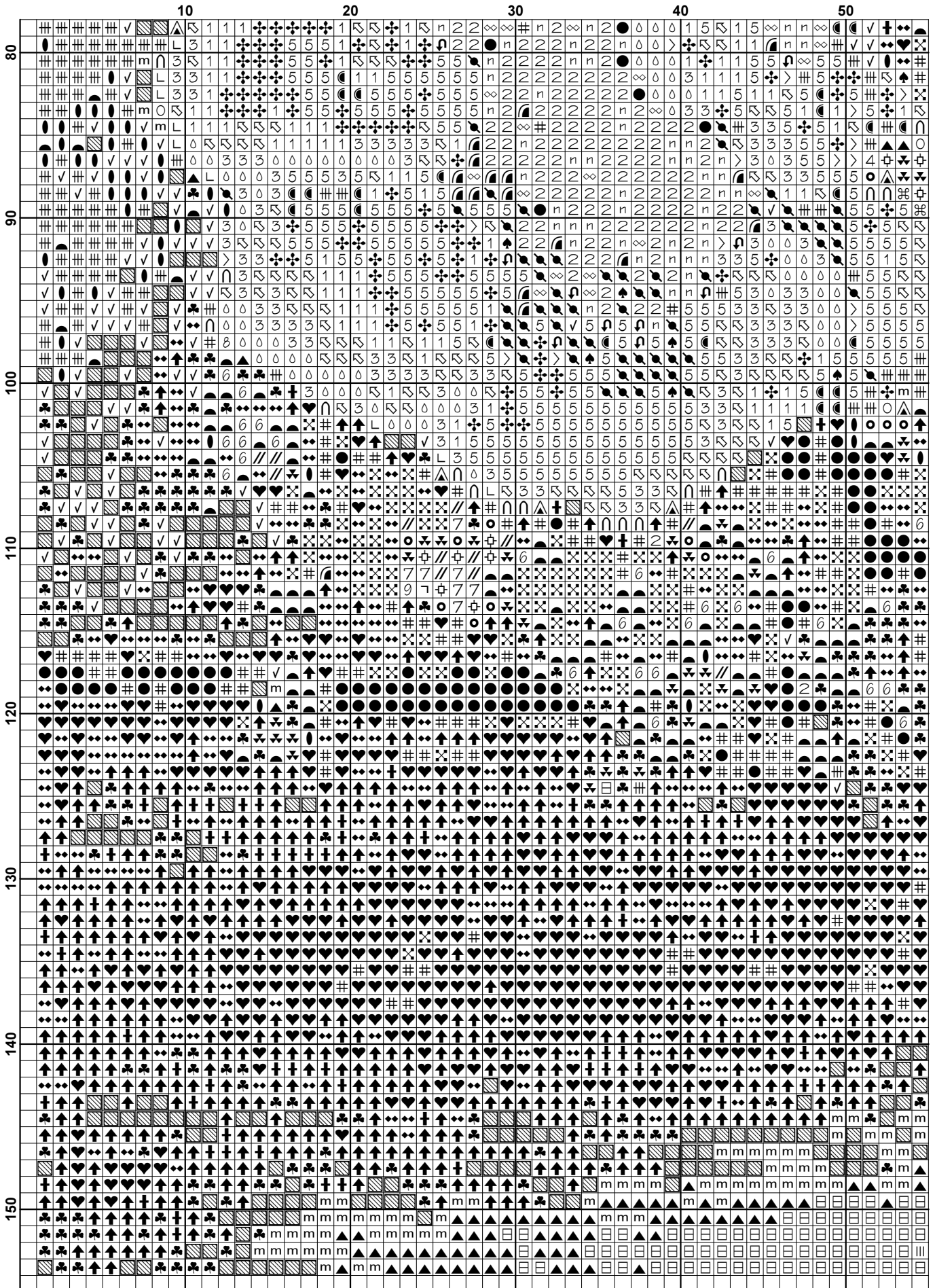
Also see our other website www.christiancrossstitch.com

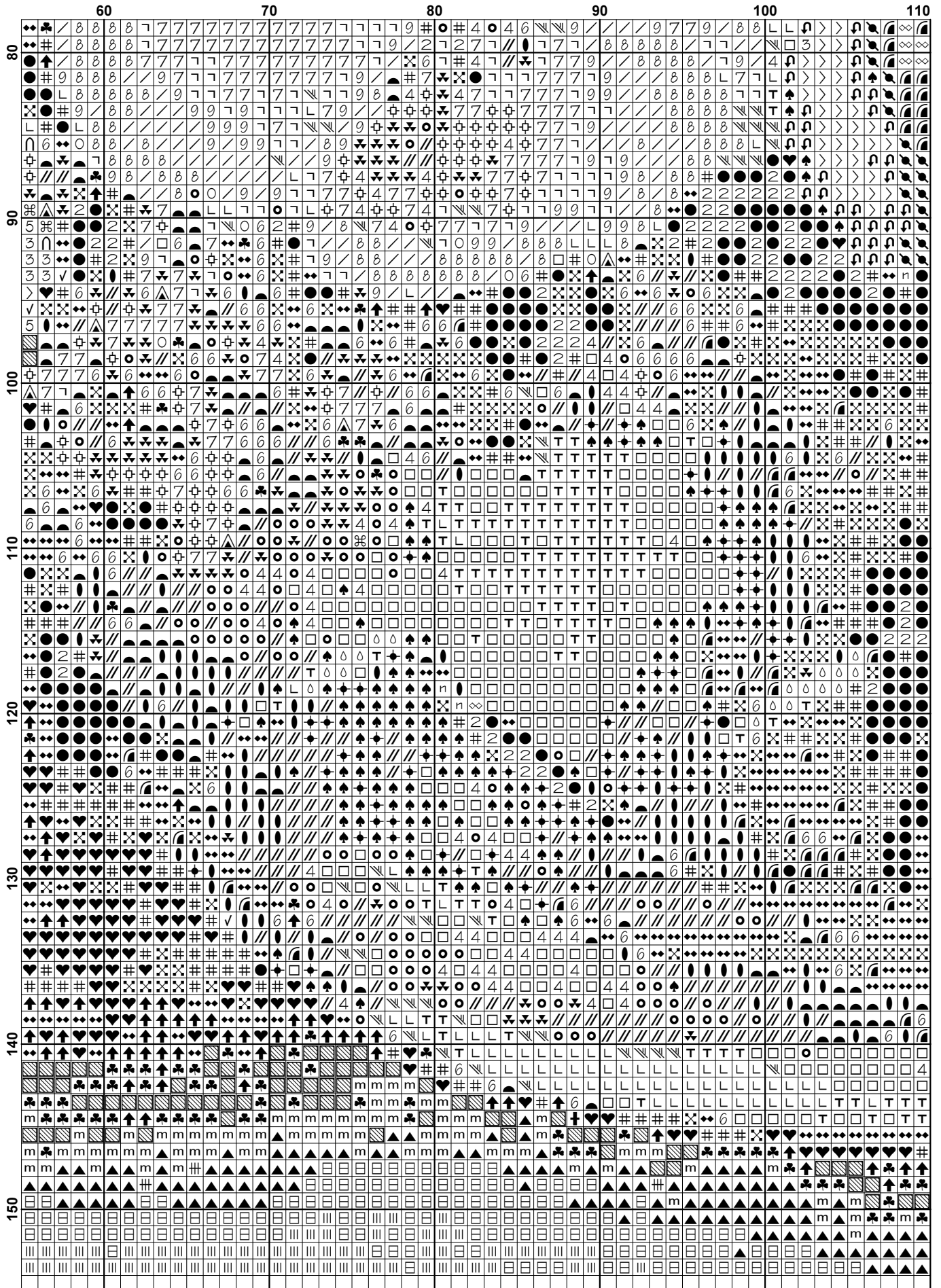


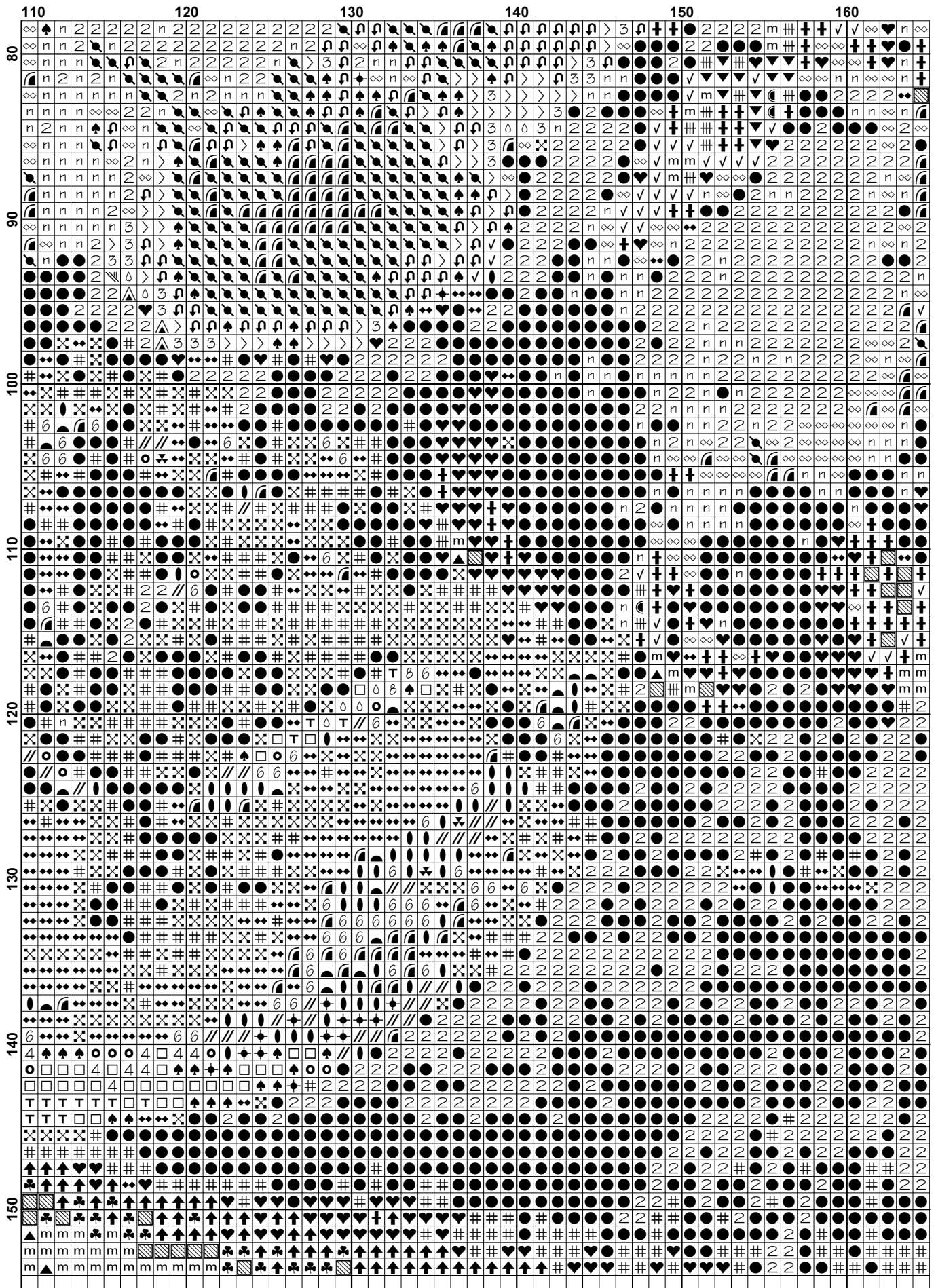


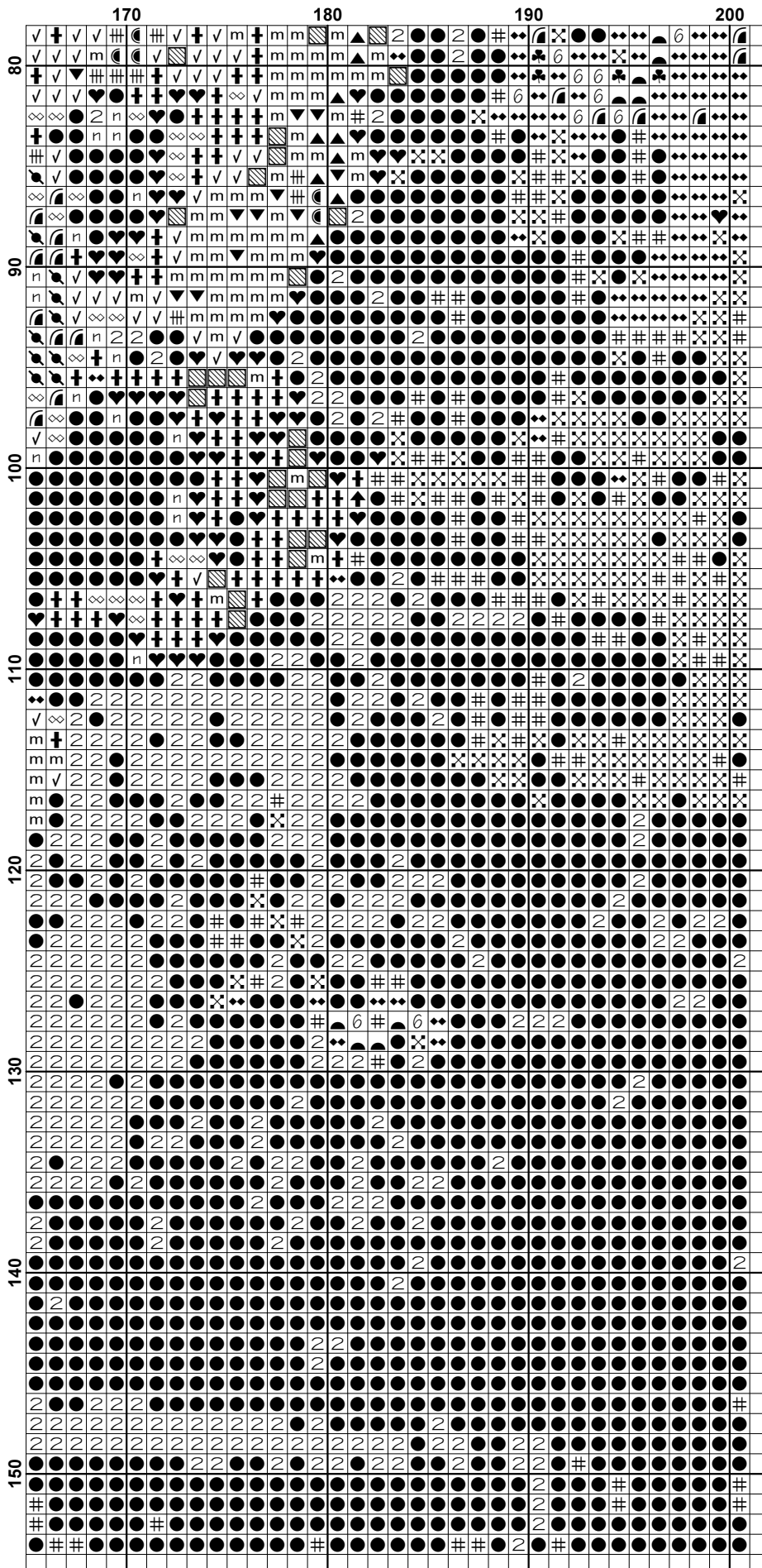













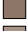





Pattern Name: Anemones
Designed By: Free Cross Stitch Online
Company: Free Cross Stitch Online
Copyright: Copyright Free Cross Stitch Online. All rights Reserved.
Fabric: Aida 14, White
 200w X 153h Stitches
Size(s): 14 Count, 14-1/4w X 10-7/8h in
 16 Count, 12-1/2w X 9-1/2h in
 18 Count, 11w X 8-1/2h in

Floss Used for Full Stitches:

Symbol	Strands	Type	Number	Color
■	2	DMC	310	Black
√	2	DMC	315	Antique Mauve-VY DK
∨	2	DMC	370	Mustard-MD
4	2	DMC	372	Mustard-LT
△	2	DMC	436	Tan
0	2	DMC	437	Tan-LT
+	2	DMC	451	Shell Gray-DK
n	2	DMC	550	Violet-VY DK
6	2	DMC	610	Drab Brown-DK
o	2	DMC	612	Drab Brown-LT
♣	2	DMC	632	Desert Sand-UL VY DK
//	2	DMC	640	Beige Gray-VY DK
⚡	2	DMC	738	Tan-VY LT
9	2	DMC	744	Yellow-Pale
/	2	DMC	745	Yellow-LT Pale
∩	2	DMC	758	Terra Cotta-VY LT
δ	2	DMC	818	Baby Pink
⊕	2	DMC	833	Golden Olive-LT
7	2	DMC	834	Golden Olive-VY LT
◆	2	DMC	839	Beige Brown-DK
T	2	DMC	842	Beige Brown-VY LT
1	2	DMC	894	Carnation-VY LT
♥	2	DMC	902	Garnet-VY DK
#	2	DMC	938	Coffee Brown-UL DK
L	2	DMC	945	Tawny
☾	2	DMC	961	Dusty Rose-DK
✦	2	DMC	962	Dusty Rose-MD
	2	DMC	977	Golden Brown-LT
⊗	2	DMC	3031	Mocha Brown-VY DK
⌘	2	DMC	3064	Desert Sand
8	2	DMC	3078	Golden Yellow-VY LT
⋈	2	DMC	3326	Rose-LT
▼	2	DMC	3350	Dusty Rose-UL DK
●	2	DMC	3371	Black Brown
+	2	DMC	3685	Mauve-DK
5	2	DMC	3688	Mauve-MD
3	2	DMC	3689	Mauve-LT
m	2	DMC	3721	Shell Pink-DK
#	2	DMC	3722	Shell Pink-MD
>	2	DMC	3727	Antique Mauve-LT
◡	2	DMC	3740	Antique Violet-DK
☐	2	DMC	3776	Mahogany-LT
⌒	2	DMC	3822	Straw-LT
▲	2	DMC	3830	Terra Cotta-MD
∞	2	DMC	3834	Grape-DK
⦿	2	DMC	3835	Grape-MD

Copyright Free Cross Stitch Online. All rights Reserved.

Symbol	Strands	Type	Number	Color
	2	DMC	3836	Grape-LT
	2	DMC	3857	Rosewood-DK
	2	DMC	3858	Rosewood-MD
	2	DMC	3860	Cocoa
	2	DMC	3861	Cocoa-LT
	2	DMC	3862	Mocha Beige-DK
	2	DMC	3864	Mocha Beige-LT

Notes:

You should begin at the centre of the pattern. Follow the arrows at the top and on the left to find the centre. Look in the corners to see the numbers in brackets to put the patterns together.

As the pattern has a few pages, the easiest way to stitch it is to stitch one page at a time.

This pattern is offered totally free from Free Cross Stitch Online. We offer one new free pattern on our website every Friday. Please see www.freecrossstitchonline.com

Please feel free to pass this pattern around to anyone for free. You cannot sell these patterns by themselves, however you can put the pattern together in a kit form and sell the kits with the fabric and floss or you can sell the completed stitched item. You cannot claim the pattern as your own or alter it in anyway and Free Cross Stitch Online will not accept any liability for the sale of kits or completed items.

Also see our other website www.christiancrossstitch.com

Usage Summary**Strands Per Skein:** 6**Skein Length:** 313.0 in

Type	Number	Full	Half	Quarter	Petite	Back(in)	Str(in)	Spec(in)	French	Bead	Skein Est.
DMC 310	310	2044	0	0	0	0.0	0.0	0.0	0	0	1.000
DMC 315	315	571	0	0	0	0.0	0.0	0.0	0	0	1.000
DMC 370	370	613	0	0	0	0.0	0.0	0.0	0	0	1.000
DMC 372	372	140	0	0	0	0.0	0.0	0.0	0	0	1.000
DMC 436	436	828	0	0	0	0.0	0.0	0.0	0	0	1.000
DMC 437	437	223	0	0	0	0.0	0.0	0.0	0	0	1.000
DMC 451	451	105	0	0	0	0.0	0.0	0.0	0	0	1.000
DMC 550	550	431	0	0	0	0.0	0.0	0.0	0	0	1.000
DMC 610	610	354	0	0	0	0.0	0.0	0.0	0	0	1.000
DMC 612	612	1073	0	0	0	0.0	0.0	0.0	0	0	1.000
DMC 632	632	436	0	0	0	0.0	0.0	0.0	0	0	1.000
DMC 640	640	758	0	0	0	0.0	0.0	0.0	0	0	1.000
DMC 738	738	401	0	0	0	0.0	0.0	0.0	0	0	1.000
DMC 744	744	211	0	0	0	0.0	0.0	0.0	0	0	1.000
DMC 745	745	351	0	0	0	0.0	0.0	0.0	0	0	1.000
DMC 758	758	341	0	0	0	0.0	0.0	0.0	0	0	1.000
DMC 818	818	344	0	0	0	0.0	0.0	0.0	0	0	1.000
DMC 833	833	142	0	0	0	0.0	0.0	0.0	0	0	1.000
DMC 834	834	445	0	0	0	0.0	0.0	0.0	0	0	1.000
DMC 839	839	1126	0	0	0	0.0	0.0	0.0	0	0	1.000
DMC 842	842	157	0	0	0	0.0	0.0	0.0	0	0	1.000
DMC 894	894	173	0	0	0	0.0	0.0	0.0	0	0	1.000
DMC 902	902	1044	0	0	0	0.0	0.0	0.0	0	0	1.000
DMC 938	938	948	0	0	0	0.0	0.0	0.0	0	0	1.000
DMC 945	945	616	0	0	0	0.0	0.0	0.0	0	0	1.000
DMC 961	961	303	0	0	0	0.0	0.0	0.0	0	0	1.000
DMC 962	962	193	0	0	0	0.0	0.0	0.0	0	0	1.000
DMC 977	977	72	0	0	0	0.0	0.0	0.0	0	0	1.000
DMC 3031	3031	963	0	0	0	0.0	0.0	0.0	0	0	1.000
DMC 3064	3064	769	0	0	0	0.0	0.0	0.0	0	0	1.000
DMC 3078	3078	619	0	0	0	0.0	0.0	0.0	0	0	1.000
DMC 3326	3326	312	0	0	0	0.0	0.0	0.0	0	0	1.000
DMC 3350	3350	270	0	0	0	0.0	0.0	0.0	0	0	1.000
DMC 3371	3371	3758	0	0	0	0.0	0.0	0.0	0	0	2.000
DMC 3685	3685	552	0	0	0	0.0	0.0	0.0	0	0	1.000
DMC 3688	3688	425	0	0	0	0.0	0.0	0.0	0	0	1.000
DMC 3689	3689	327	0	0	0	0.0	0.0	0.0	0	0	1.000
DMC 3721	3721	591	0	0	0	0.0	0.0	0.0	0	0	1.000
DMC 3722	3722	657	0	0	0	0.0	0.0	0.0	0	0	1.000
DMC 3727	3727	335	0	0	0	0.0	0.0	0.0	0	0	1.000
DMC 3740	3740	382	0	0	0	0.0	0.0	0.0	0	0	1.000
DMC 3776	3776	239	0	0	0	0.0	0.0	0.0	0	0	1.000
DMC 3822	3822	402	0	0	0	0.0	0.0	0.0	0	0	1.000
DMC 3830	3830	259	0	0	0	0.0	0.0	0.0	0	0	1.000
DMC 3834	3834	371	0	0	0	0.0	0.0	0.0	0	0	1.000
DMC 3835	3835	545	0	0	0	0.0	0.0	0.0	0	0	1.000
DMC 3836	3836	316	0	0	0	0.0	0.0	0.0	0	0	1.000
DMC 3857	3857	753	0	0	0	0.0	0.0	0.0	0	0	1.000
DMC 3858	3858	551	0	0	0	0.0	0.0	0.0	0	0	1.000
DMC 3860	3860	1160	0	0	0	0.0	0.0	0.0	0	0	1.000
DMC 3861	3861	295	0	0	0	0.0	0.0	0.0	0	0	1.000
DMC 3862	3862	899	0	0	0	0.0	0.0	0.0	0	0	1.000

Type	Number	Full	Half	Quarter	Petite	Back(in)	Str(in)	Spec(in)	French	Bead	Skein Est.
■ DMC	3864	407	0	0	0	0.0	0.0	0.0	0	0	1.000