

# Autumn Landscape

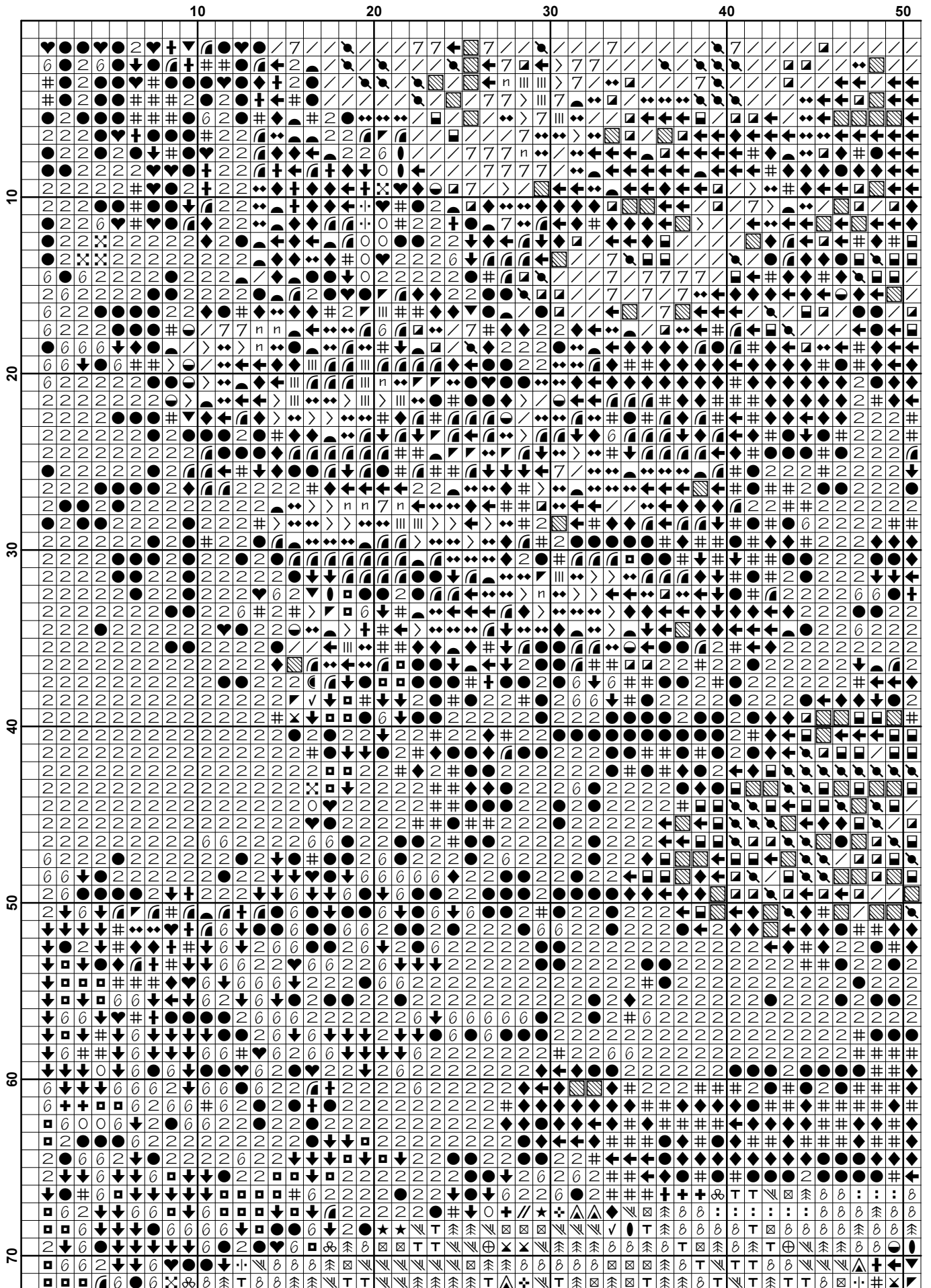
[www.freecrossstitchonline.com](http://www.freecrossstitchonline.com)

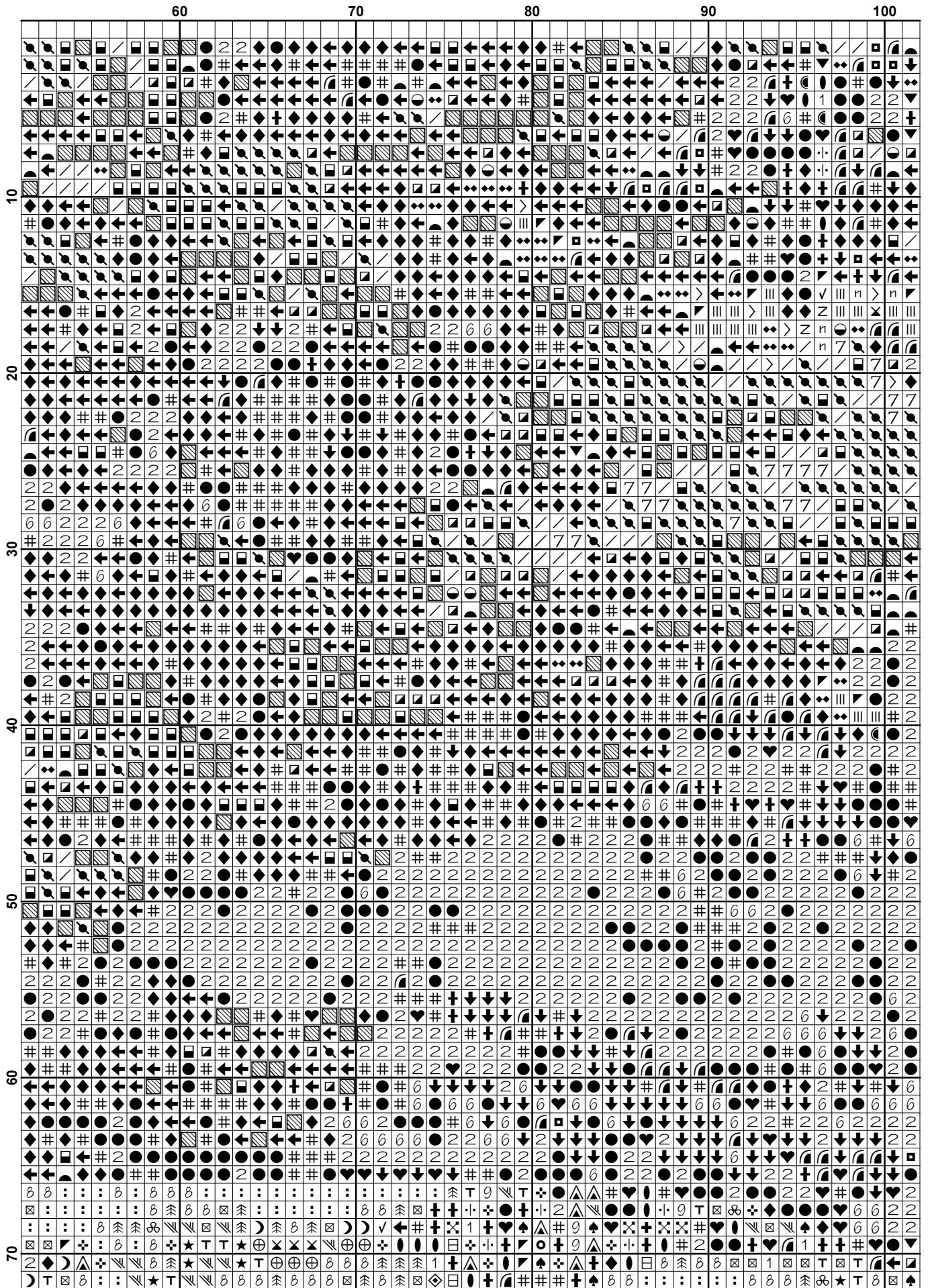


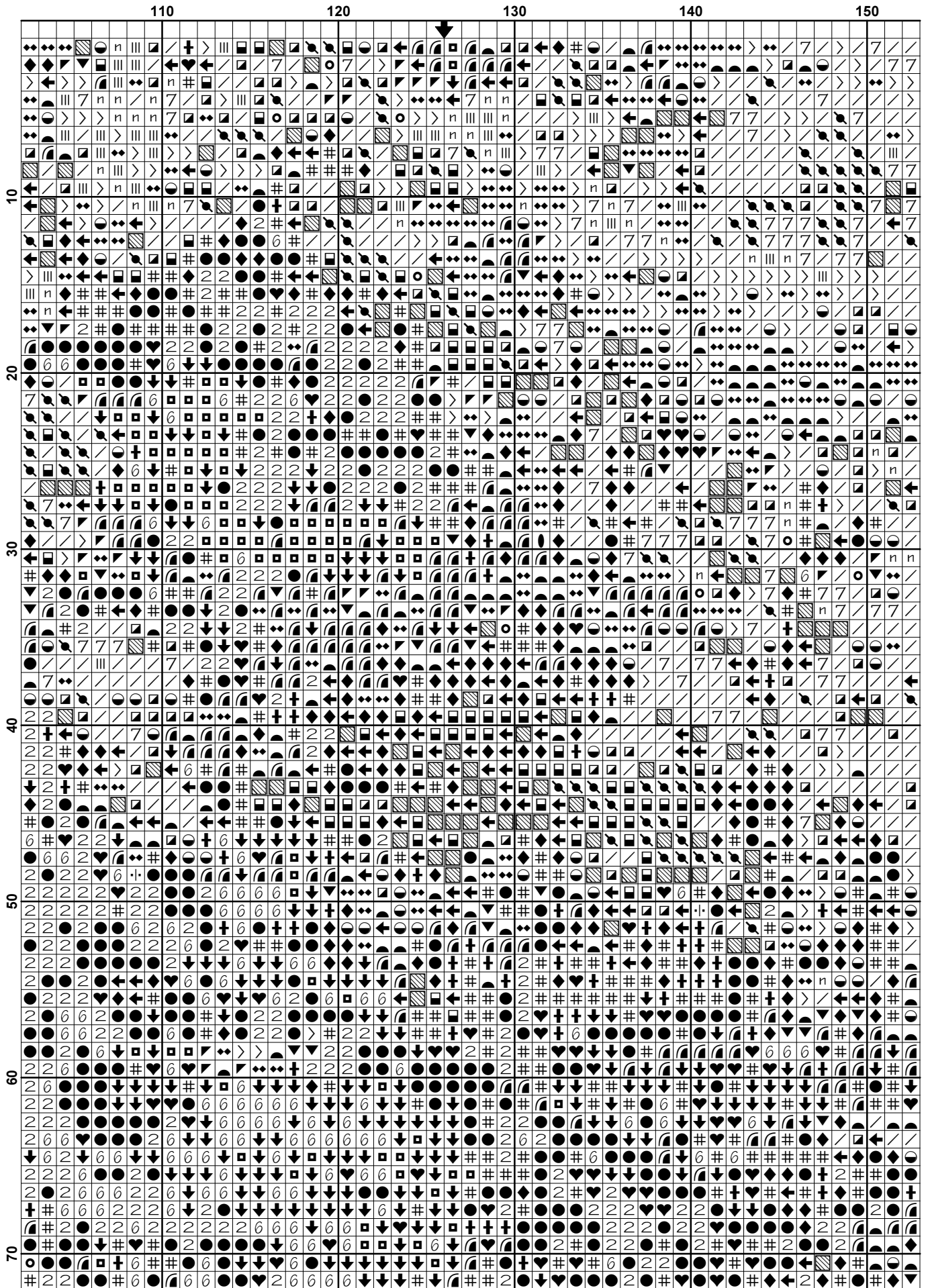
This pattern is offered totally free from Free Cross Stitch Online. We offer one new free pattern on our website every Friday. Please see [www.freecrossstitchonline.com](http://www.freecrossstitchonline.com)

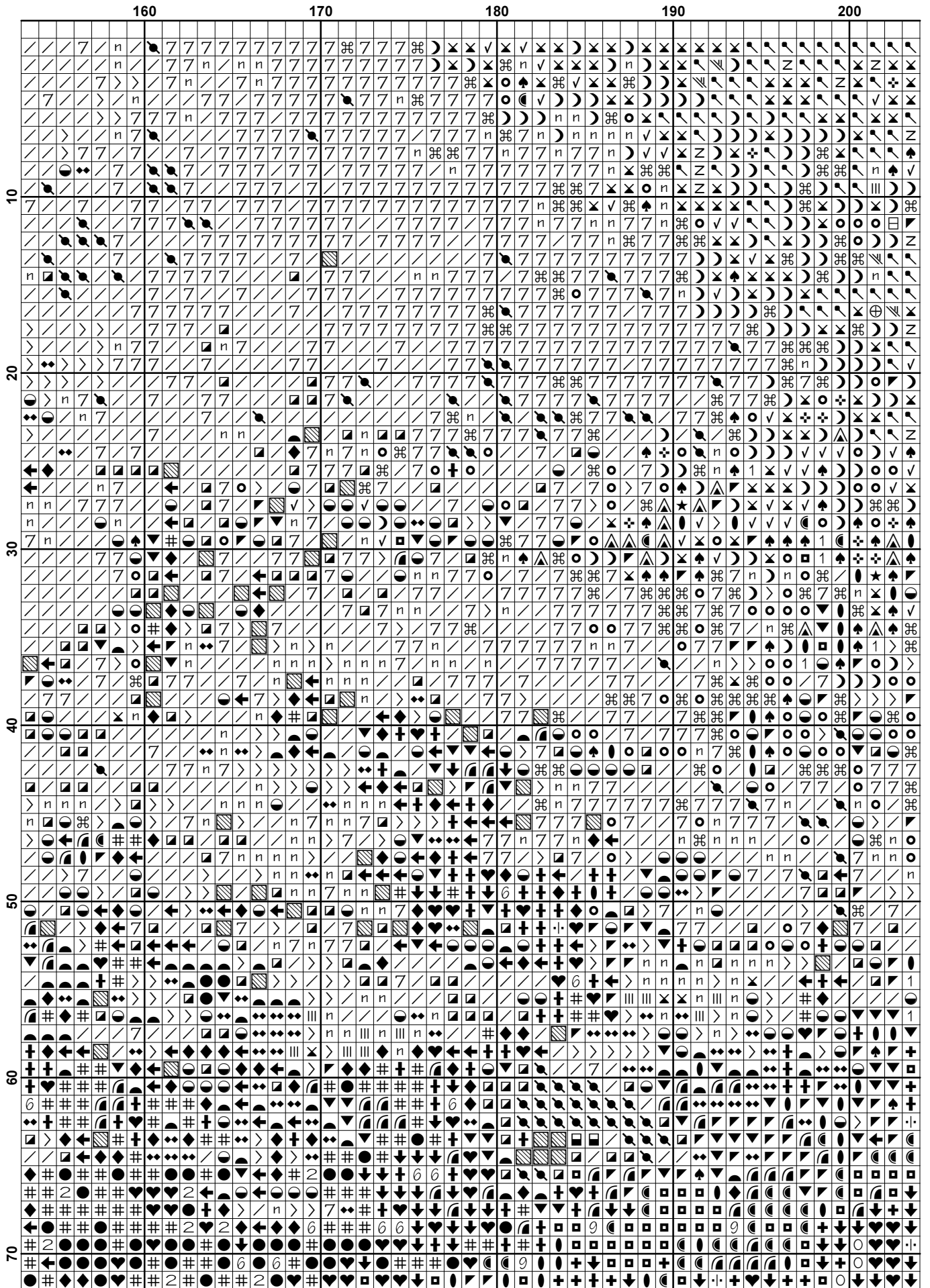
Please feel free to pass this pattern around to anyone for free. You cannot sell these patterns by themselves, however you can put the pattern together in a kit form and sell the kits or you can sell the completed stitched item.

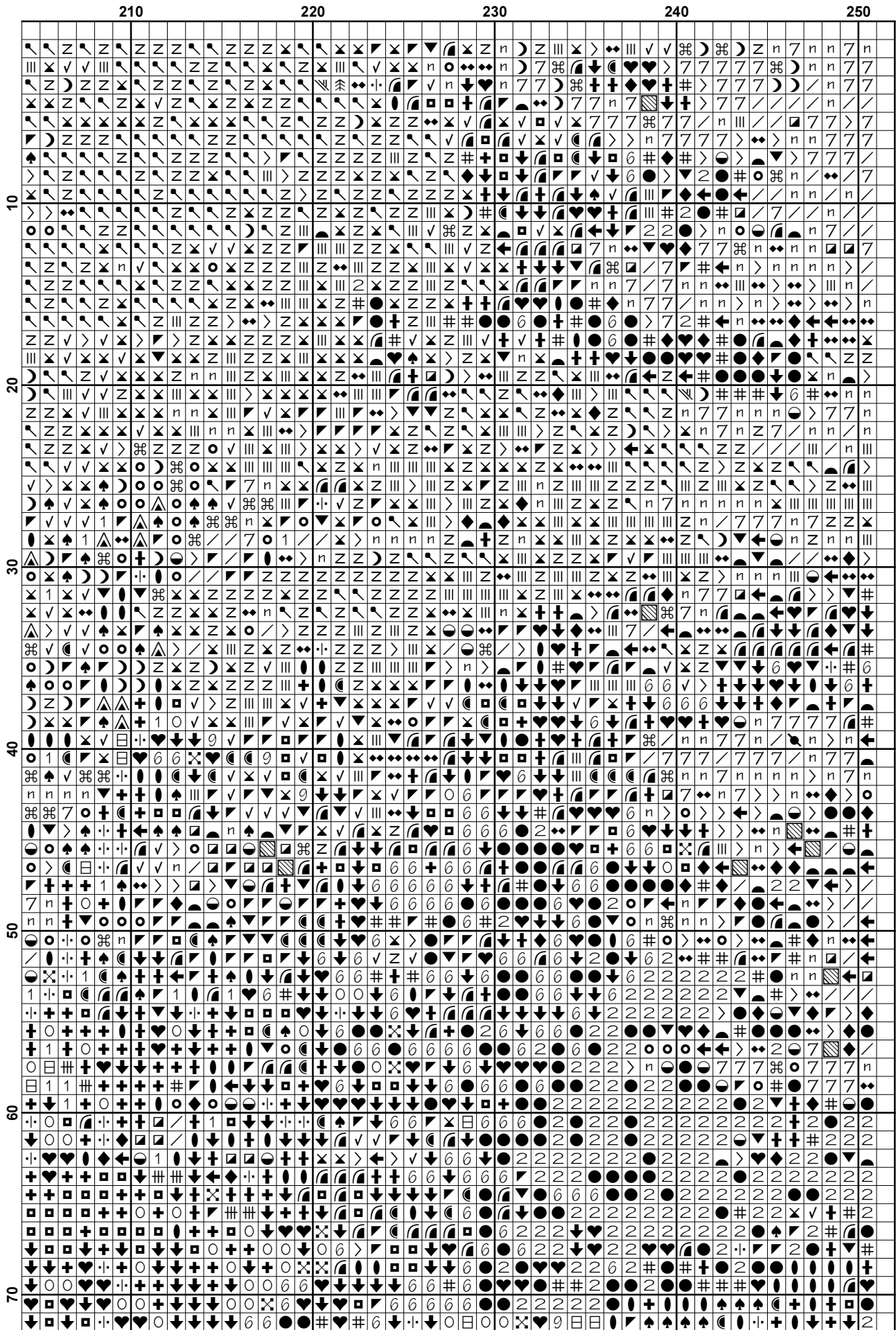
Also see out other website [www.christiancrossstitch.com](http://www.christiancrossstitch.com)

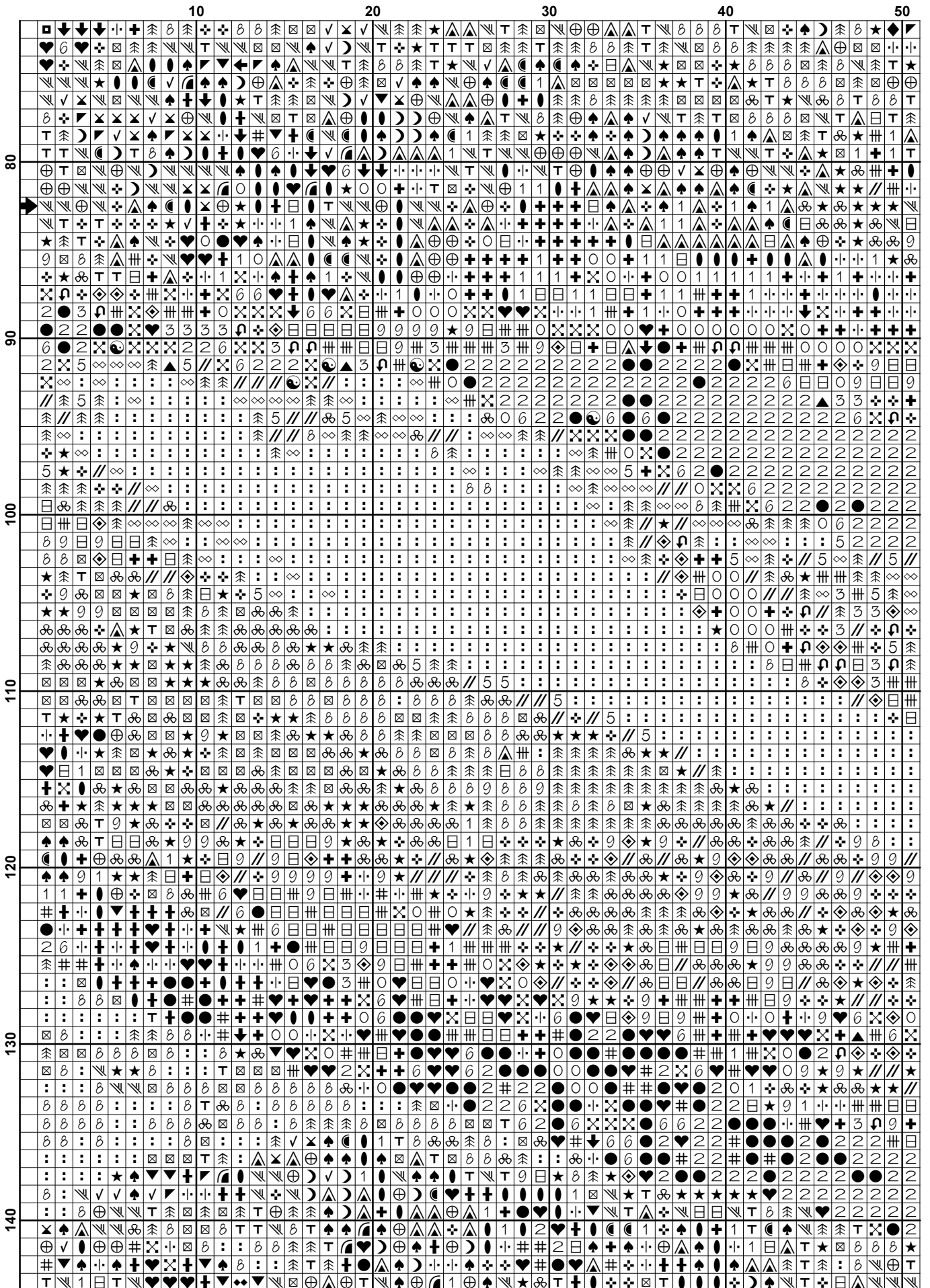


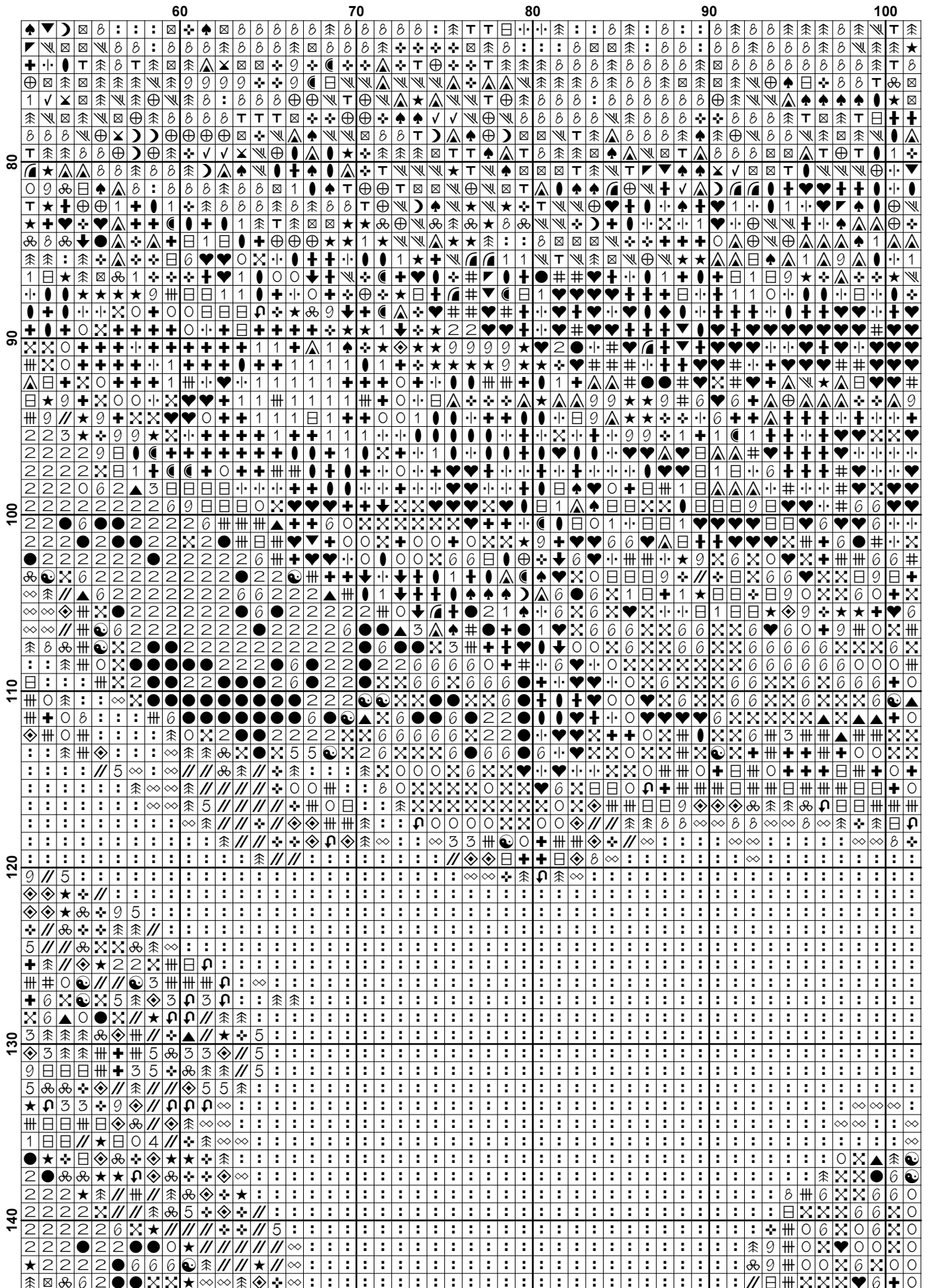




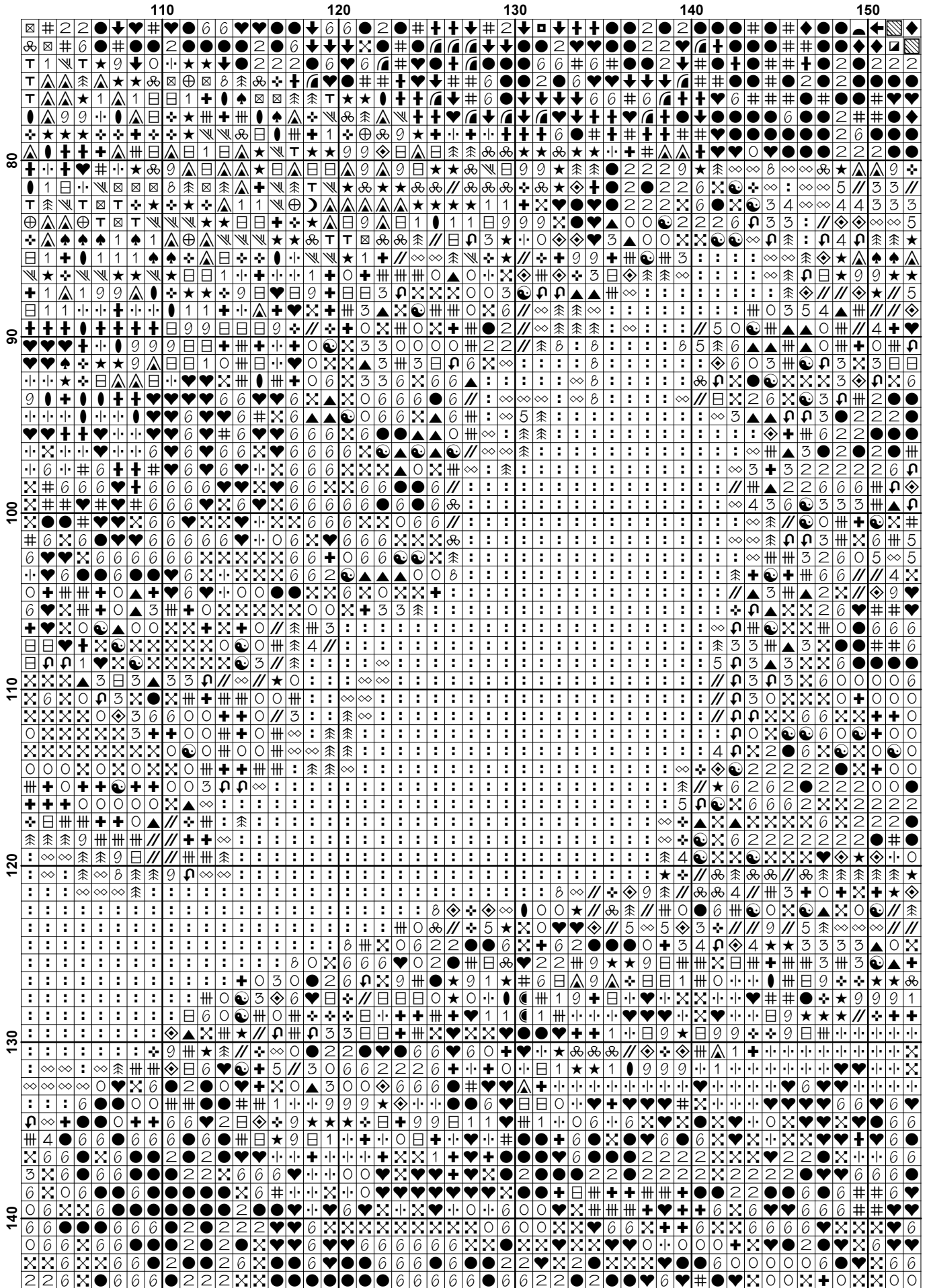


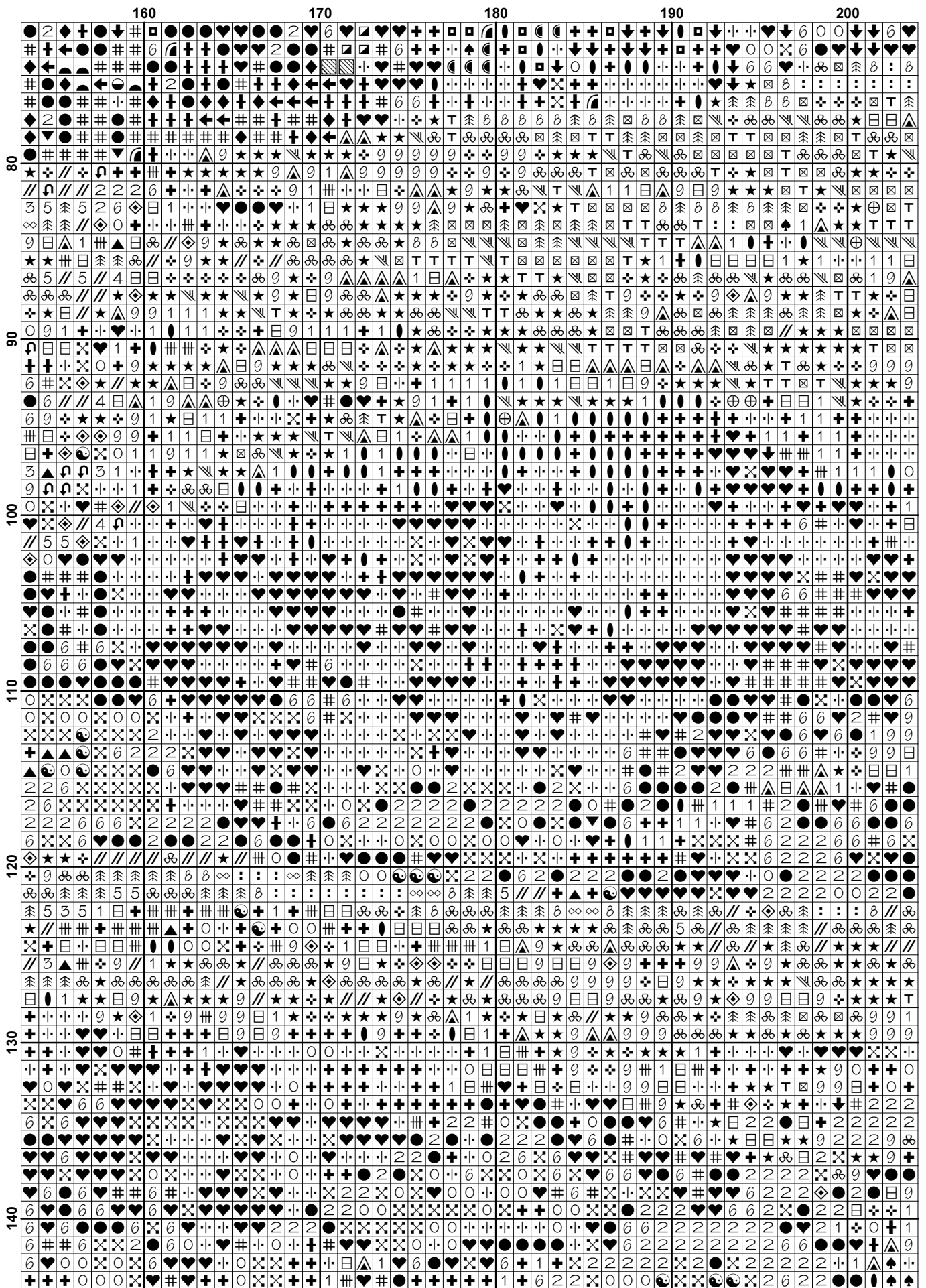


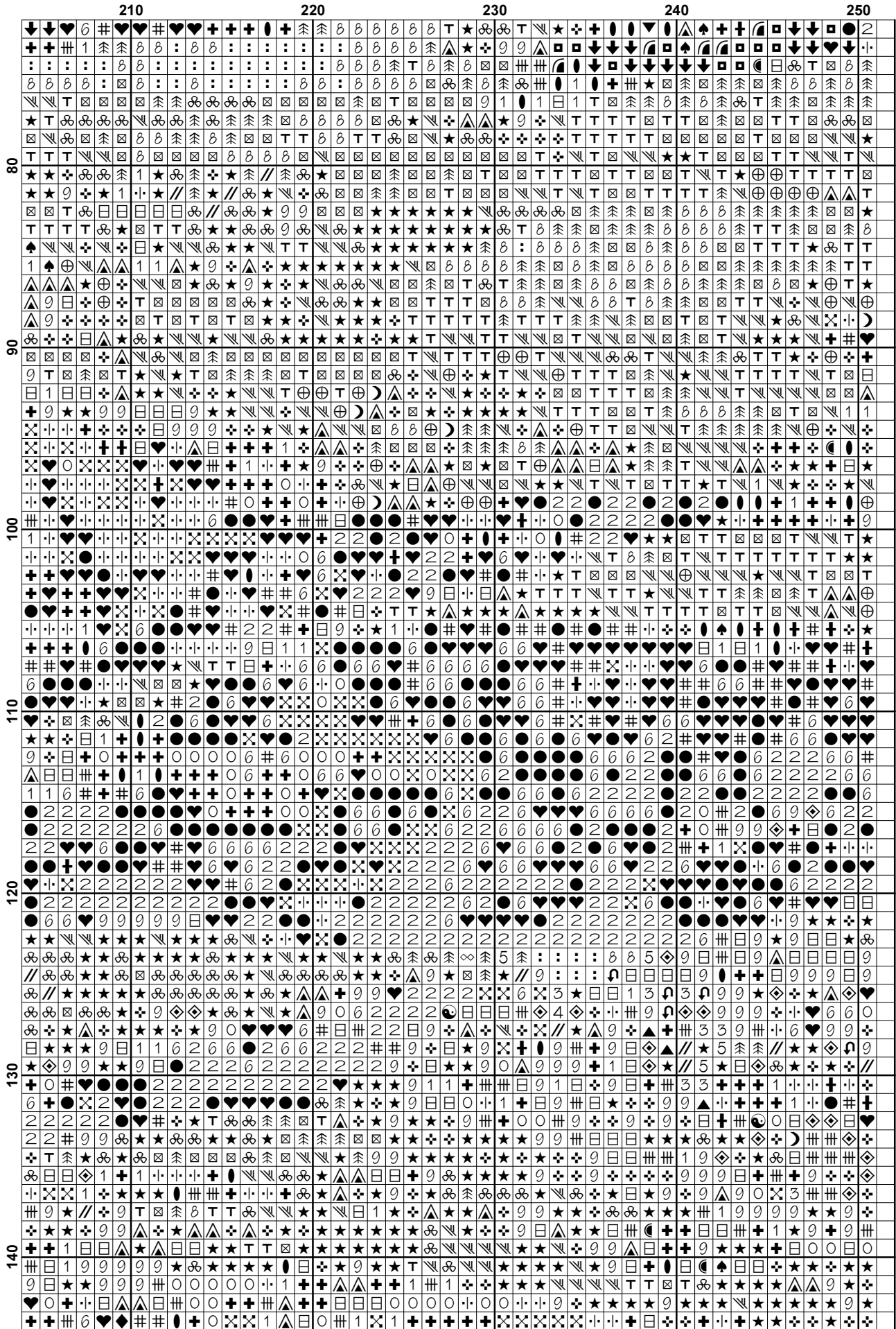


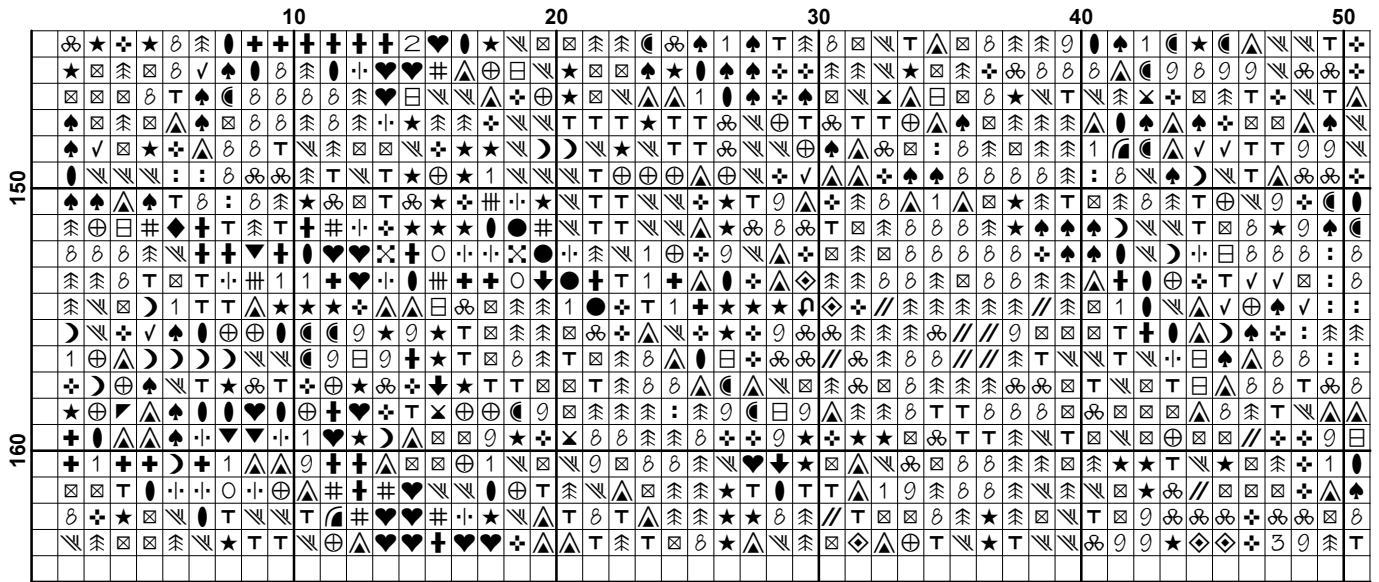




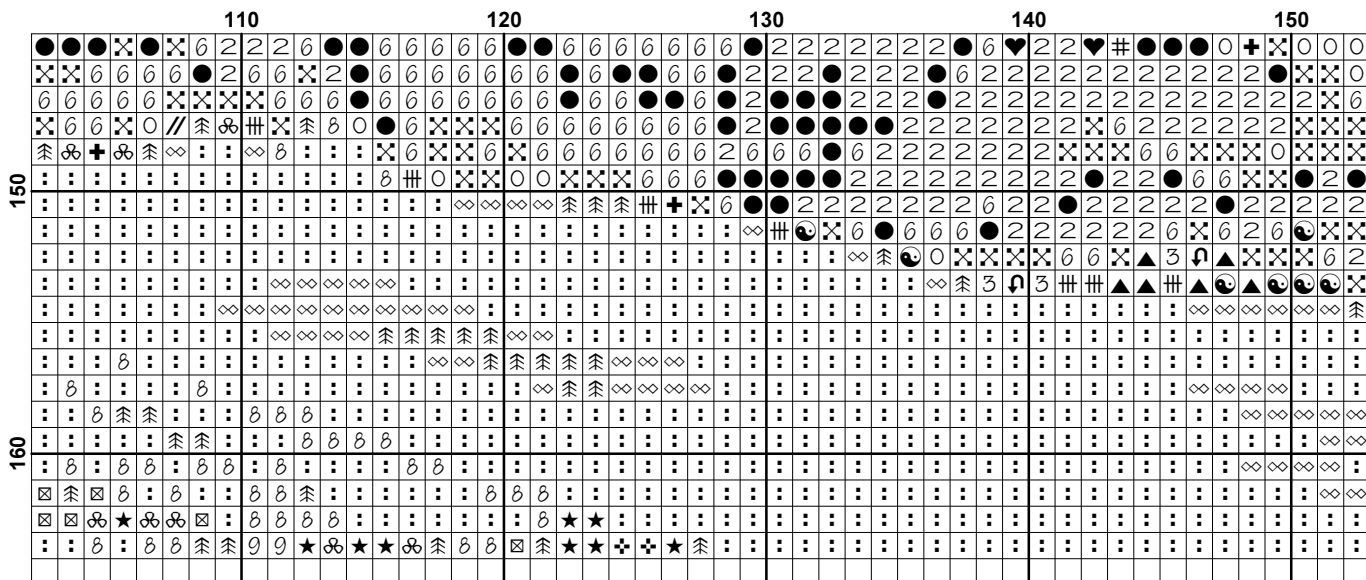

























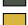









**Pattern Name:** Autumn Landscape  
**Designed By:** Free Cross Stitch Online  
**Company:** Free Cross Stitch Online  
**Copyright:** Copyright Free Cross Stitch Online. All rights Reserved.  
**Fabric:** Aida 14, White  
 250w X 163h Stitches  
**Size(s):** 14 Count, 17-3/4w X 11-5/8h in  
 16 Count, 15-5/8w X 10-1/8h in  
 18 Count, 13-7/8w X 9h in

**Floss Used for Full Stitches:**

Symbol	Strands	Type	Number	Color
	2	DMC	169	Pewter-LT
	2	DMC	300	Mahogany-VY DK
	2	DMC	301	Mahogany-MD
	2	DMC	310	Black
	2	DMC	317	Pewter Gray
	2	DMC	318	Steel Gray-LT
	2	DMC	370	Mustard-MD
	2	DMC	372	Mustard-LT
	2	DMC	400	Mahogany-DK
	2	DMC	413	Pewter Gray-DK
	2	DMC	414	Steel Gray-DK
	2	DMC	415	Pearl Gray
	2	DMC	422	Hazelnut Brown-LT
	2	DMC	434	Brown-LT
	2	DMC	436	Tan
	2	DMC	469	Avocado Green
	2	DMC	612	Drab Brown-LT
	2	DMC	640	Beige Gray-VY DK
	2	DMC	642	Beige Gray-DK
	2	DMC	644	Beige Gray-MD
	2	DMC	645	Beaver Gray-VY DK
	2	DMC	647	Beaver Gray-MD
	2	DMC	648	Beaver Gray-LT
	2	DMC	677	Old Gold-VY LT
	2	DMC	720	Orange Spice-DK
	2	DMC	725	Topaz
	2	DMC	728	Topaz
	2	DMC	730	Olive Green-VY DK
	2	DMC	738	Tan-VY LT
	2	DMC	739	Tan-UL VY LT
	2	DMC	762	Pearl Gray-VY LT
	2	DMC	780	Topaz-UL VY DK
	2	DMC	782	Topaz-DK
	2	DMC	801	Coffee Brown-DK
	2	DMC	817	Coral Red-VY DK
	2	DMC	822	Beige Gray-LT
	2	DMC	833	Golden Olive-LT
	2	DMC	839	Beige Brown-DK
	2	DMC	840	Beige Brown-MD
	2	DMC	844	Beaver Brown-UL DK
	2	DMC	919	Red Copper
	2	DMC	920	Copper-MD
	2	DMC	922	Copper-LT
	2	DMC	934	Black Avocado Green
	2	DMC	936	Avocado Green-VY DK
	2	DMC	938	Coffee Brown-UL DK

Symbol	Strands	Type	Number	Color
	2	DMC	946	Burnt Orange-MD
	2	DMC	970	Pumpkin-LT
	2	DMC	976	Golden Brown-MD
	2	DMC	3012	Khaki Green-MD
	2	DMC	3031	Mocha Brown-VY DK
	2	DMC	3371	Black Brown
	2	DMC	3770	Tawny-VY LT
	2	DMC	3776	Mahogany-LT
	2	DMC	3782	Mocha Brown-LT
	2	DMC	3787	Brown Gray-DK
	2	DMC	3799	Pewter Gray-VY DK
	2	DMC	3820	Straw-DK
	2	DMC	3829	Old Gold-VY DK
	2	DMC	3852	Straw-VY DK
	2	DMC	3853	Autumn Gold-DK
	2	DMC	3862	Mocha Beige-DK
	2	DMC	3865	Winter White

**Notes:**

You should begin at the centre of the pattern. Follow the arrows at the top and on the left to find the centre. Look in the corners to see the numbers in brackets to put the patterns together.

As the pattern has a few pages, the easiest way to stitch it is to stitch one page at a time.

This pattern is offered totally free from Free Cross Stitch Online. We offer one new free pattern on our website every Friday. Please see [www.freecrossstitchonline.com](http://www.freecrossstitchonline.com)

Please feel free to pass this pattern around to anyone for free. You cannot sell these patterns by themselves, however you can put the pattern together in a kit form and sell the kits with the fabric and floss or you can sell the completed stitched item. You cannot claim the pattern as your own or alter it in anyway and Free Cross Stitch Online will not accept any liability for the sale of kits or completed items.


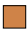






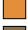


Also see our other website [www.christiancrossstitch.com](http://www.christiancrossstitch.com)

Usage Summary

Strands Per Skein: 6

Skein Length: 313.0 in

Type	Number	Full	Half	Quarter	Petite	Back(in)	Str(in)	Spec(in)	French	Bead	Skein Est.
DMC	169	139	0	0	0	0.0	0.0	0.0	0	0	1.000
DMC	300	1065	0	0	0	0.0	0.0	0.0	0	0	1.000
DMC	301	284	0	0	0	0.0	0.0	0.0	0	0	1.000
DMC	310	3161	0	0	0	0.0	0.0	0.0	0	0	2.000
DMC	317	192	0	0	0	0.0	0.0	0.0	0	0	1.000
DMC	318	78	0	0	0	0.0	0.0	0.0	0	0	1.000
DMC	370	276	0	0	0	0.0	0.0	0.0	0	0	1.000
DMC	372	697	0	0	0	0.0	0.0	0.0	0	0	1.000
DMC	400	985	0	0	0	0.0	0.0	0.0	0	0	1.000
DMC	413	169	0	0	0	0.0	0.0	0.0	0	0	1.000
DMC	414	191	0	0	0	0.0	0.0	0.0	0	0	1.000
DMC	415	112	0	0	0	0.0	0.0	0.0	0	0	1.000
DMC	422	196	0	0	0	0.0	0.0	0.0	0	0	1.000
DMC	434	172	0	0	0	0.0	0.0	0.0	0	0	1.000
DMC	436	227	0	0	0	0.0	0.0	0.0	0	0	1.000
DMC	469	300	0	0	0	0.0	0.0	0.0	0	0	1.000
DMC	612	493	0	0	0	0.0	0.0	0.0	0	0	1.000
DMC	640	591	0	0	0	0.0	0.0	0.0	0	0	1.000
DMC	642	510	0	0	0	0.0	0.0	0.0	0	0	1.000
DMC	644	665	0	0	0	0.0	0.0	0.0	0	0	1.000
DMC	645	445	0	0	0	0.0	0.0	0.0	0	0	1.000
DMC	647	198	0	0	0	0.0	0.0	0.0	0	0	1.000
DMC	648	346	0	0	0	0.0	0.0	0.0	0	0	1.000
DMC	677	511	0	0	0	0.0	0.0	0.0	0	0	1.000
DMC	720	1309	0	0	0	0.0	0.0	0.0	0	0	1.000
DMC	725	261	0	0	0	0.0	0.0	0.0	0	0	1.000
DMC	728	267	0	0	0	0.0	0.0	0.0	0	0	1.000
DMC	730	609	0	0	0	0.0	0.0	0.0	0	0	1.000
DMC	738	589	0	0	0	0.0	0.0	0.0	0	0	1.000
DMC	739	678	0	0	0	0.0	0.0	0.0	0	0	1.000
DMC	762	406	0	0	0	0.0	0.0	0.0	0	0	1.000
DMC	780	338	0	0	0	0.0	0.0	0.0	0	0	1.000
DMC	782	512	0	0	0	0.0	0.0	0.0	0	0	1.000
DMC	801	573	0	0	0	0.0	0.0	0.0	0	0	1.000
DMC	817	351	0	0	0	0.0	0.0	0.0	0	0	1.000
DMC	822	985	0	0	0	0.0	0.0	0.0	0	0	1.000
DMC	833	167	0	0	0	0.0	0.0	0.0	0	0	1.000
DMC	839	1027	0	0	0	0.0	0.0	0.0	0	0	1.000
DMC	840	420	0	0	0	0.0	0.0	0.0	0	0	1.000
DMC	844	632	0	0	0	0.0	0.0	0.0	0	0	1.000
DMC	919	528	0	0	0	0.0	0.0	0.0	0	0	1.000
DMC	920	418	0	0	0	0.0	0.0	0.0	0	0	1.000
DMC	922	160	0	0	0	0.0	0.0	0.0	0	0	1.000
DMC	934	1366	0	0	0	0.0	0.0	0.0	0	0	1.000
DMC	936	849	0	0	0	0.0	0.0	0.0	0	0	1.000
DMC	938	1357	0	0	0	0.0	0.0	0.0	0	0	1.000
DMC	946	459	0	0	0	0.0	0.0	0.0	0	0	1.000
DMC	970	847	0	0	0	0.0	0.0	0.0	0	0	1.000
DMC	976	443	0	0	0	0.0	0.0	0.0	0	0	1.000
DMC	3012	139	0	0	0	0.0	0.0	0.0	0	0	1.000
DMC	3031	1403	0	0	0	0.0	0.0	0.0	0	0	1.000
DMC	3371	2245	0	0	0	0.0	0.0	0.0	0	0	1.000

Type	Number	Full	Half	Quarter	Petite	Back(in)	Str(in)	Spec(in)	French	Bead	Skein Est.
 DMC	3770	832	0	0	0	0.0	0.0	0.0	0	0	1.000
 DMC	3776	157	0	0	0	0.0	0.0	0.0	0	0	1.000
 DMC	3782	1085	0	0	0	0.0	0.0	0.0	0	0	1.000
 DMC	3787	964	0	0	0	0.0	0.0	0.0	0	0	1.000
 DMC	3799	1024	0	0	0	0.0	0.0	0.0	0	0	1.000
 DMC	3820	388	0	0	0	0.0	0.0	0.0	0	0	1.000
 DMC	3829	281	0	0	0	0.0	0.0	0.0	0	0	1.000
 DMC	3852	206	0	0	0	0.0	0.0	0.0	0	0	1.000
 DMC	3853	367	0	0	0	0.0	0.0	0.0	0	0	1.000
 DMC	3862	481	0	0	0	0.0	0.0	0.0	0	0	1.000
 DMC	3865	3624	0	0	0	0.0	0.0	0.0	0	0	2.000