

Castle on Mountain

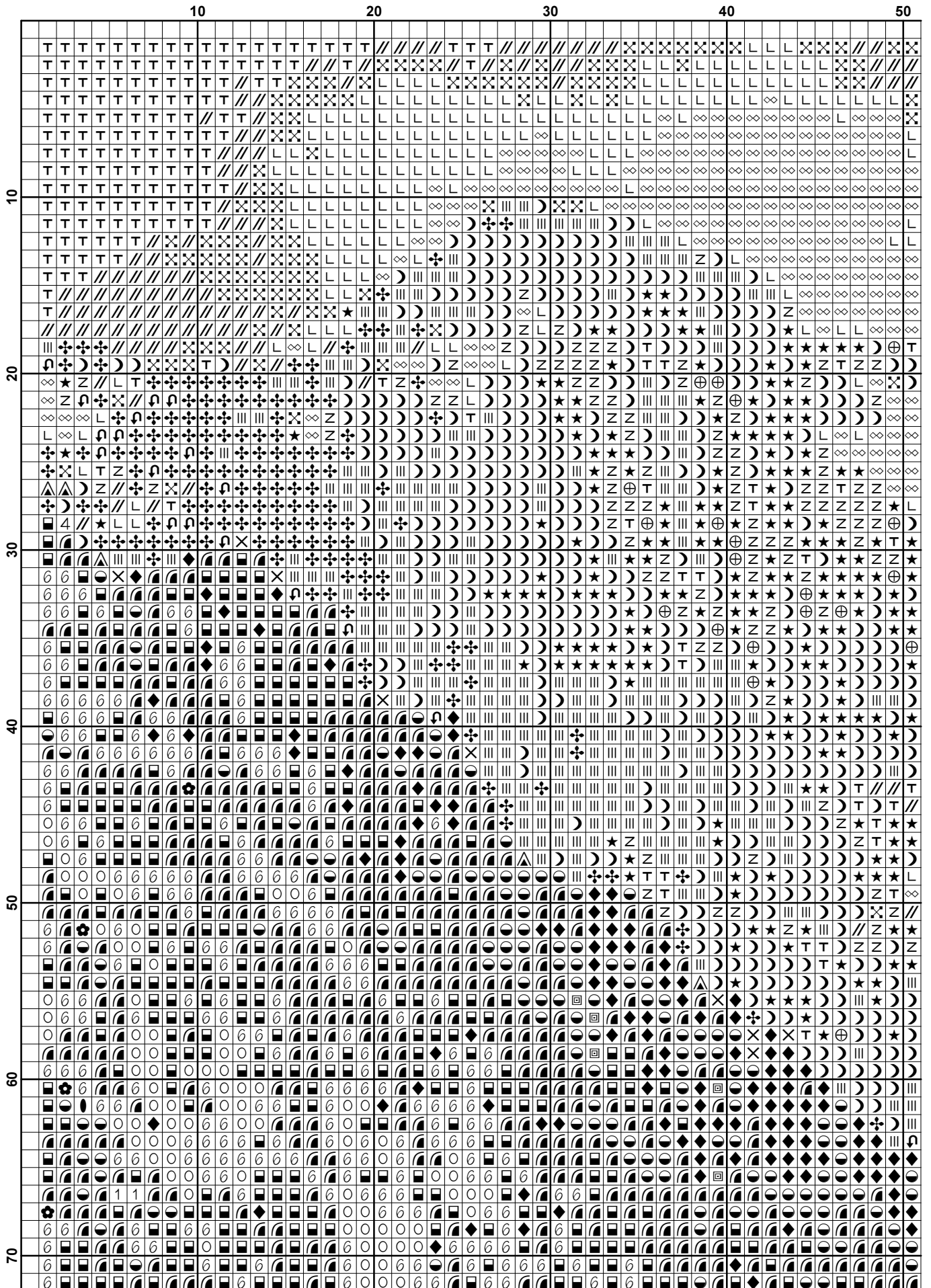
www.freecrossstitchonline.com

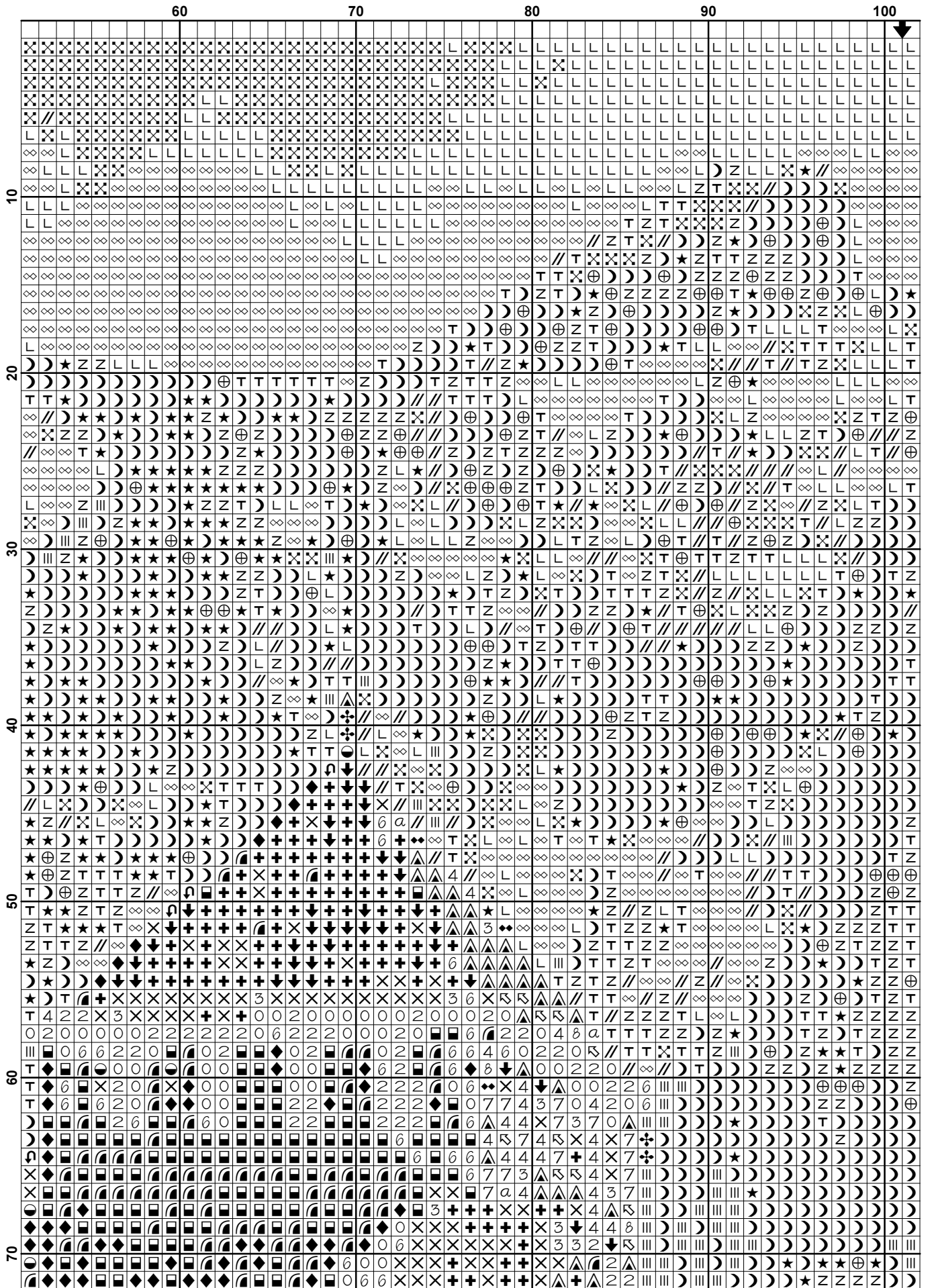


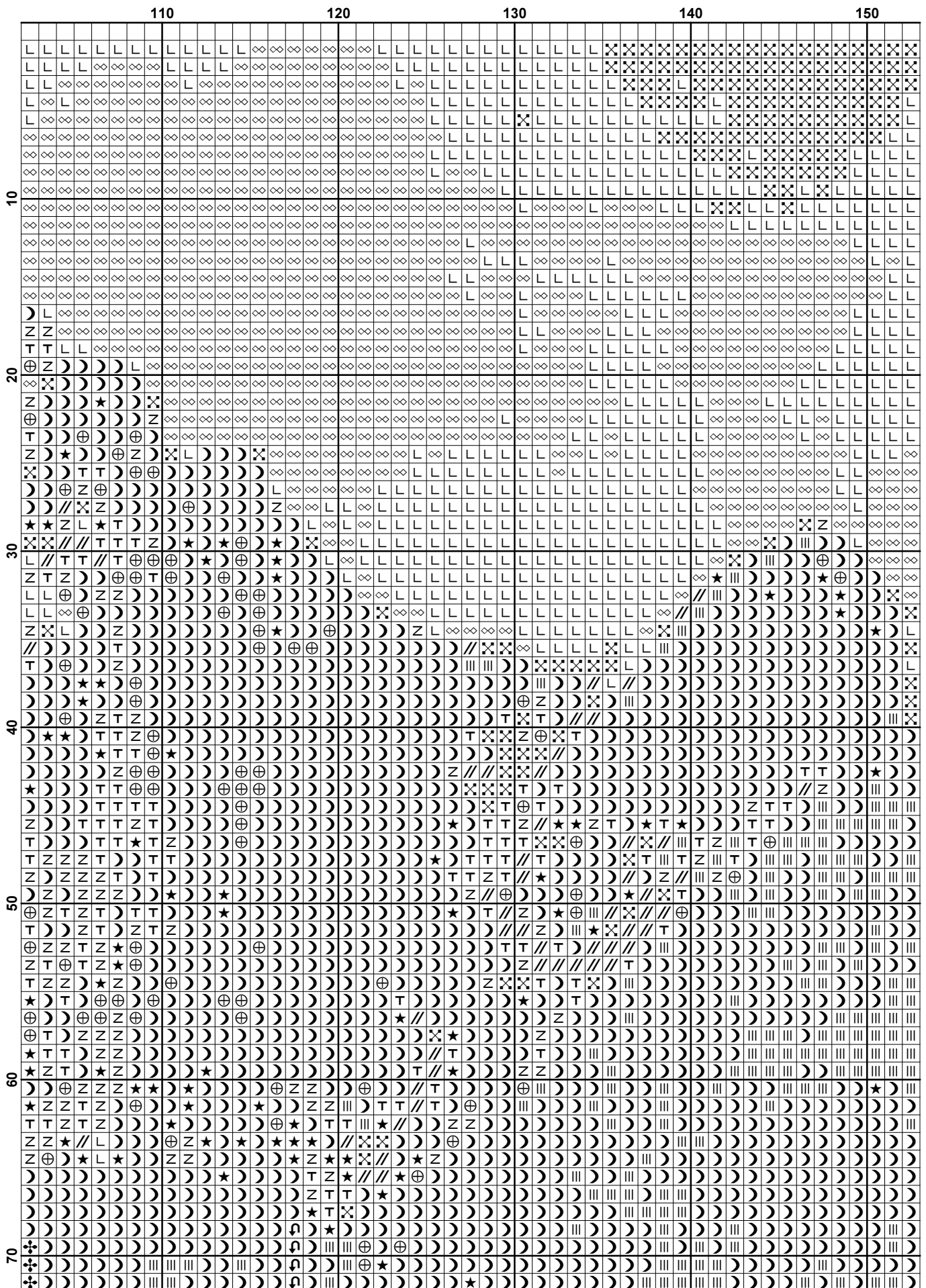
This pattern is offered totally free from Free Cross Stitch Online. We offer one new free pattern on our website every Friday. Please see www.freecrossstitchonline.com

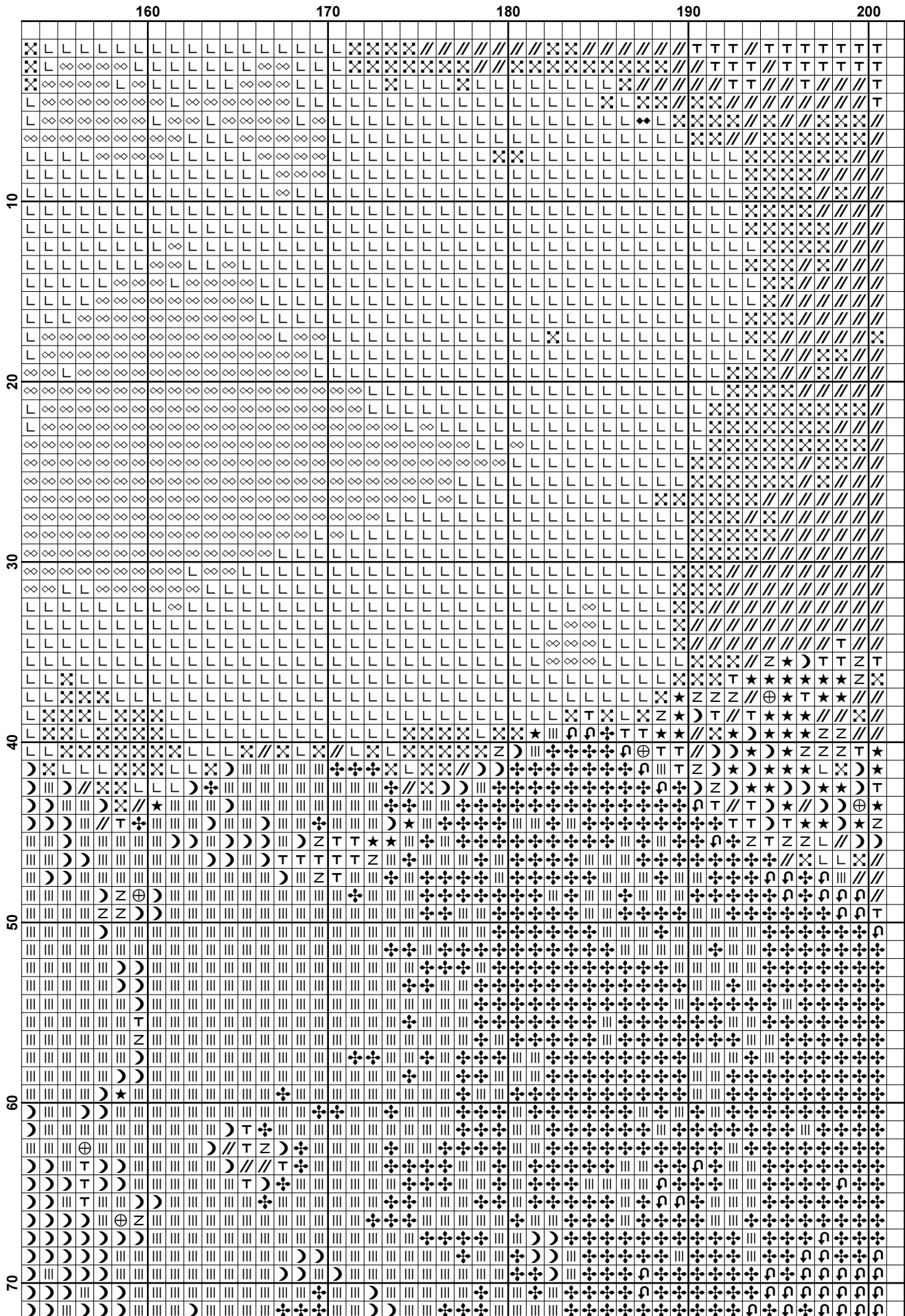
Please feel free to pass this pattern around to anyone for free. You cannot sell these patterns by themselves, however you can put the pattern together in a kit form and sell the kits or you can sell the completed stitched item.

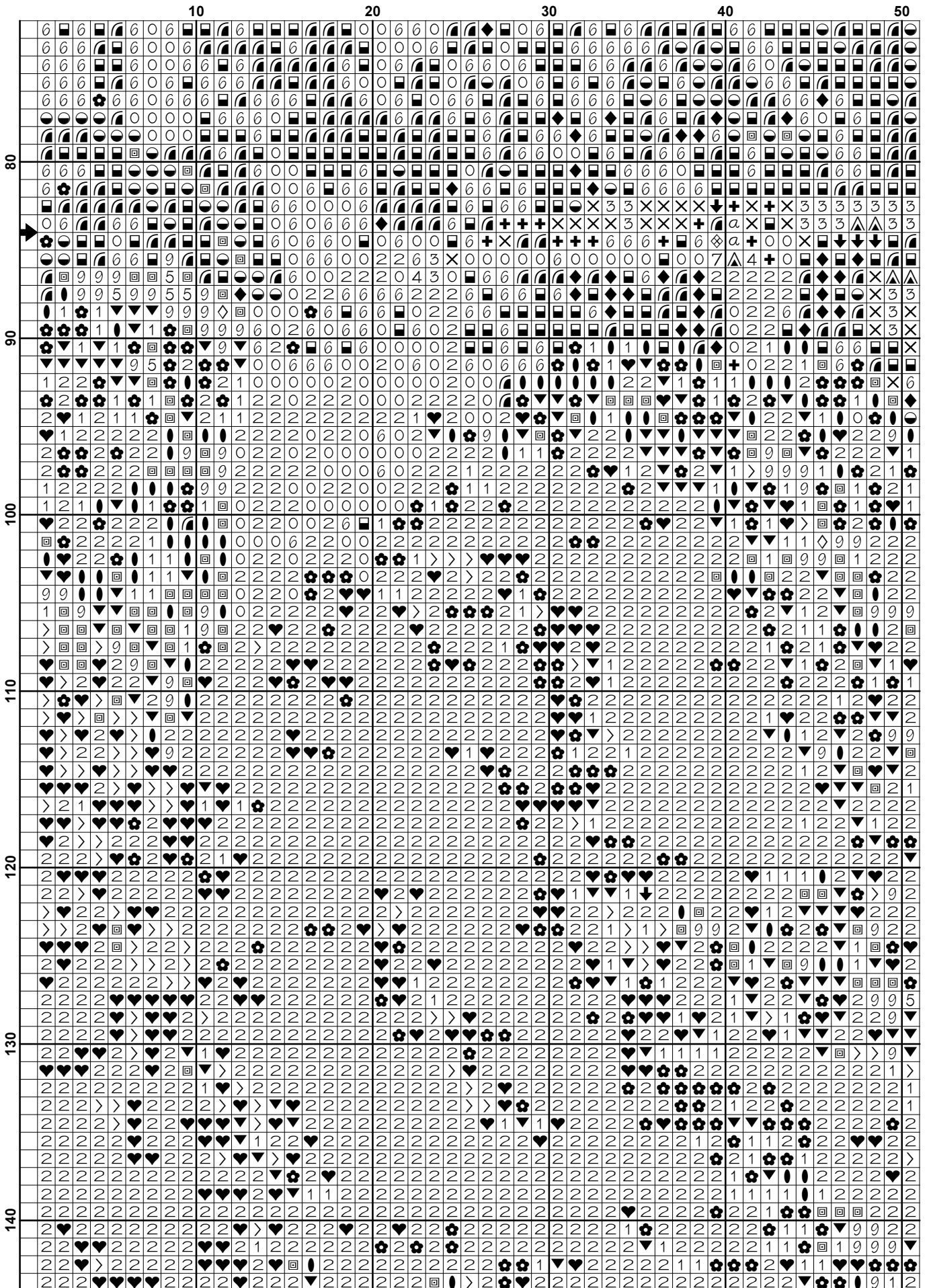
Also see our other website www.christiancrossstitch.com

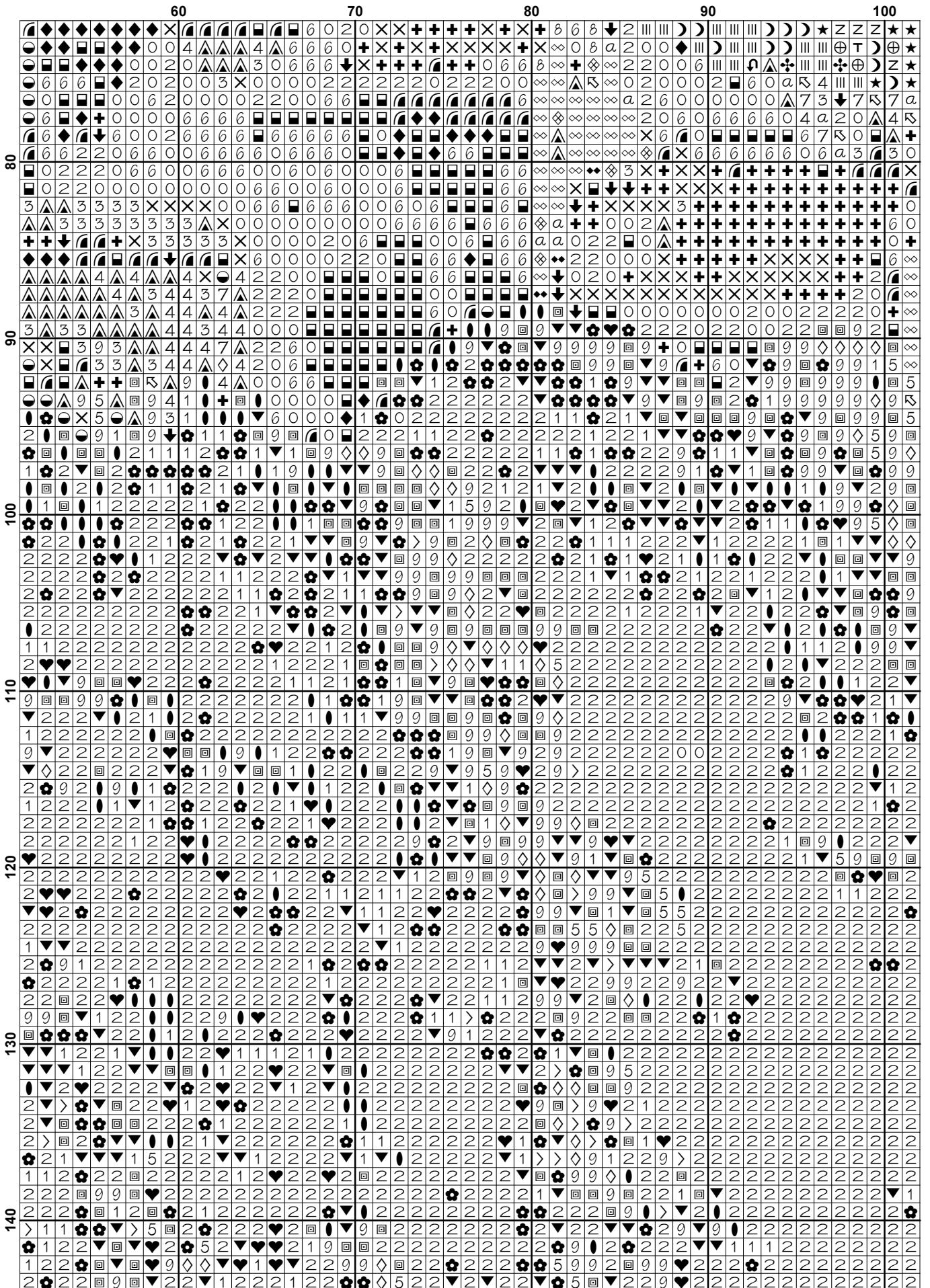


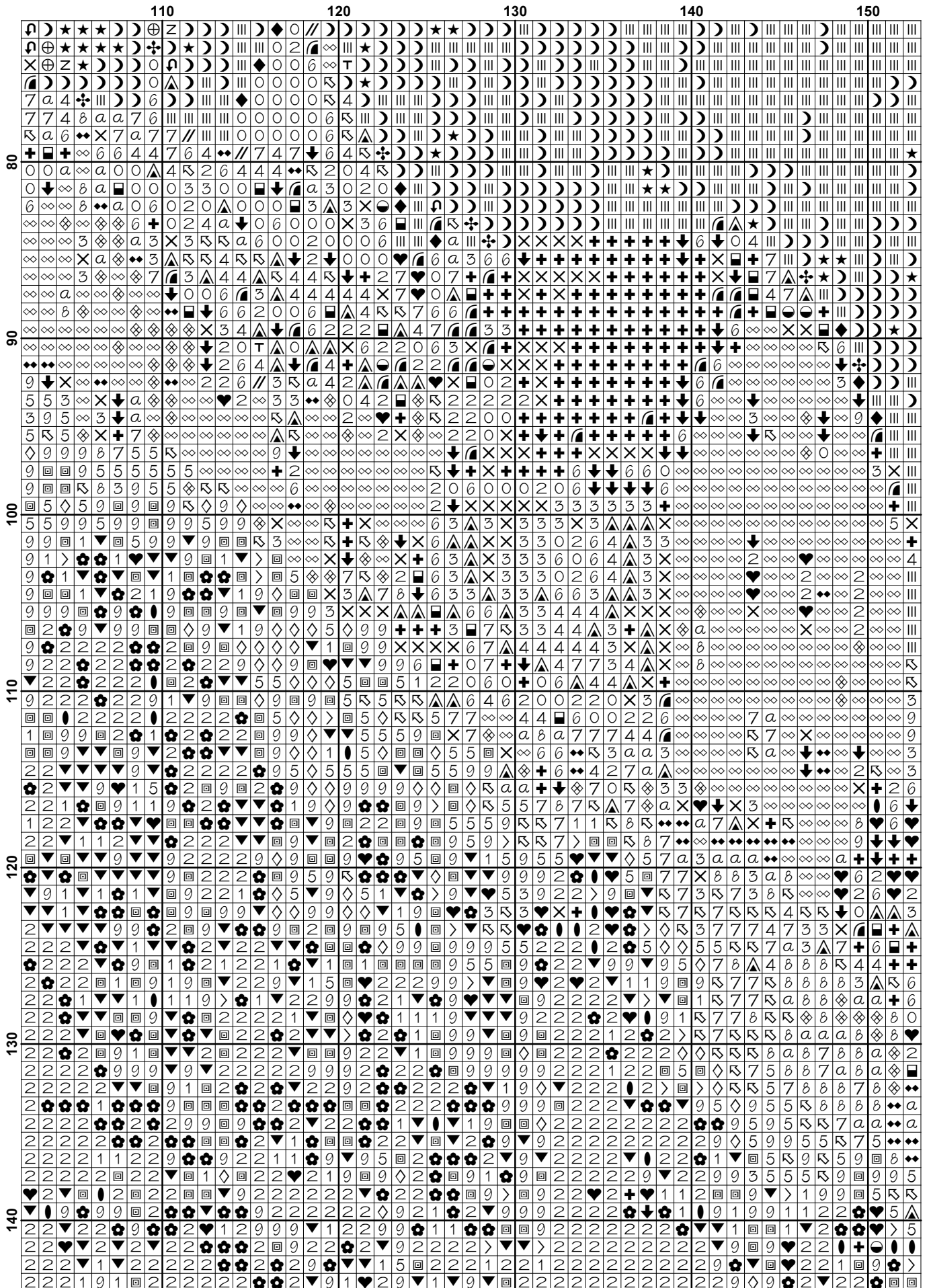


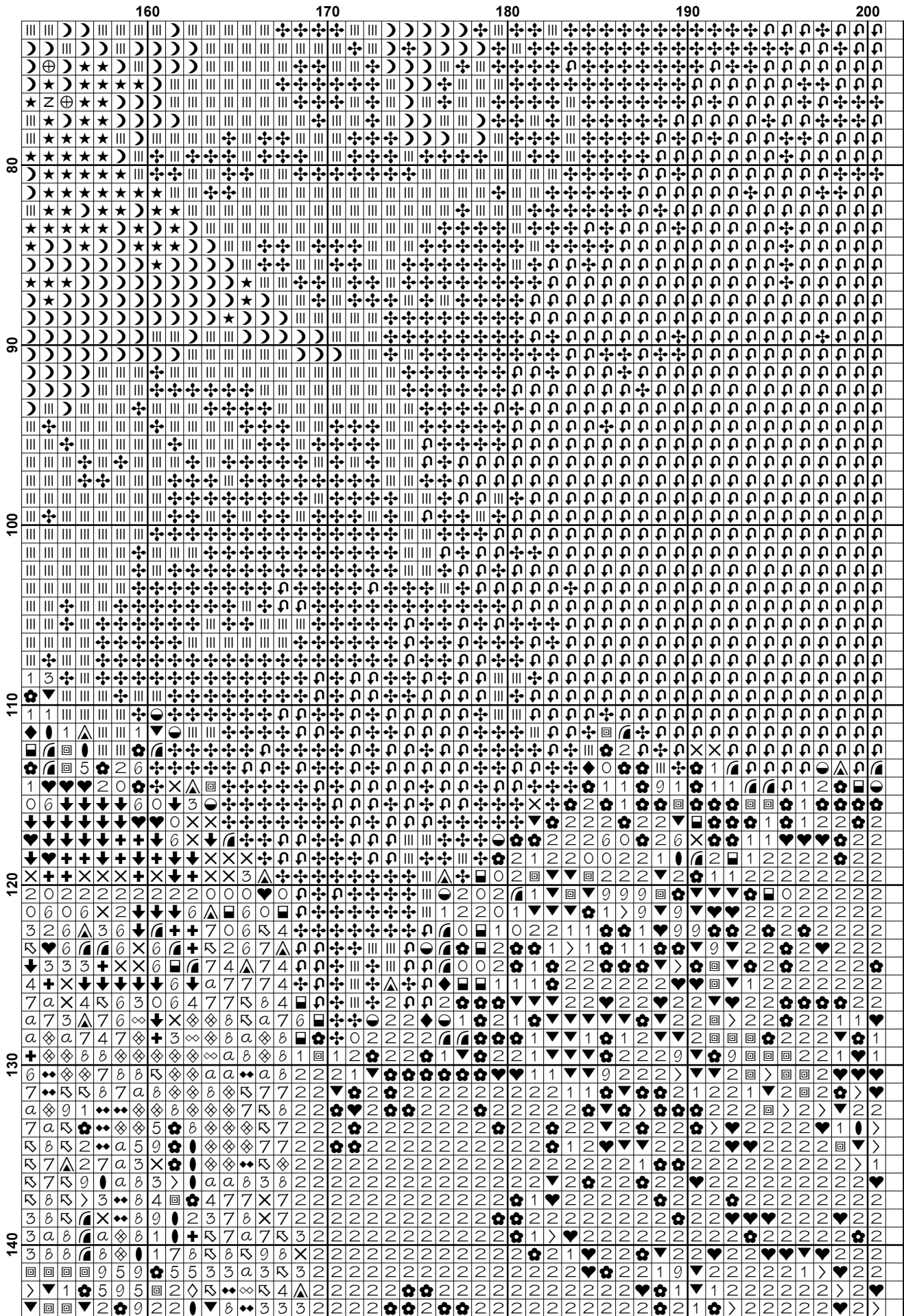


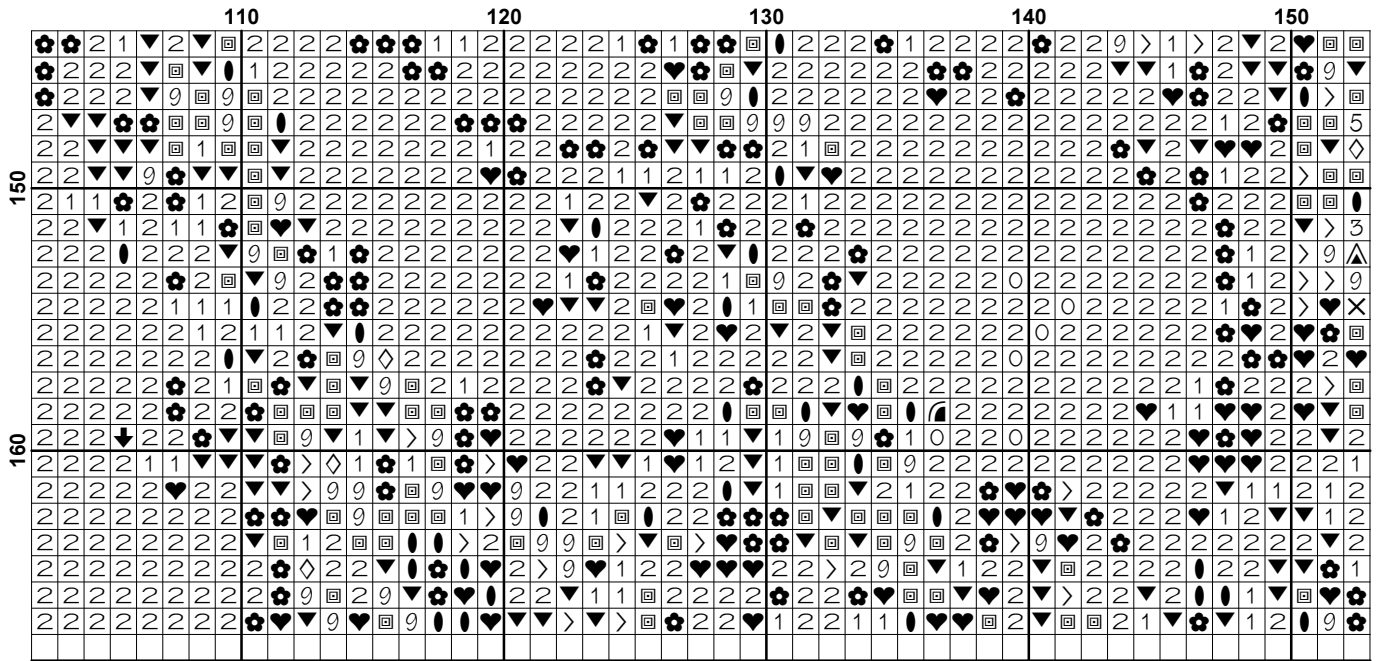


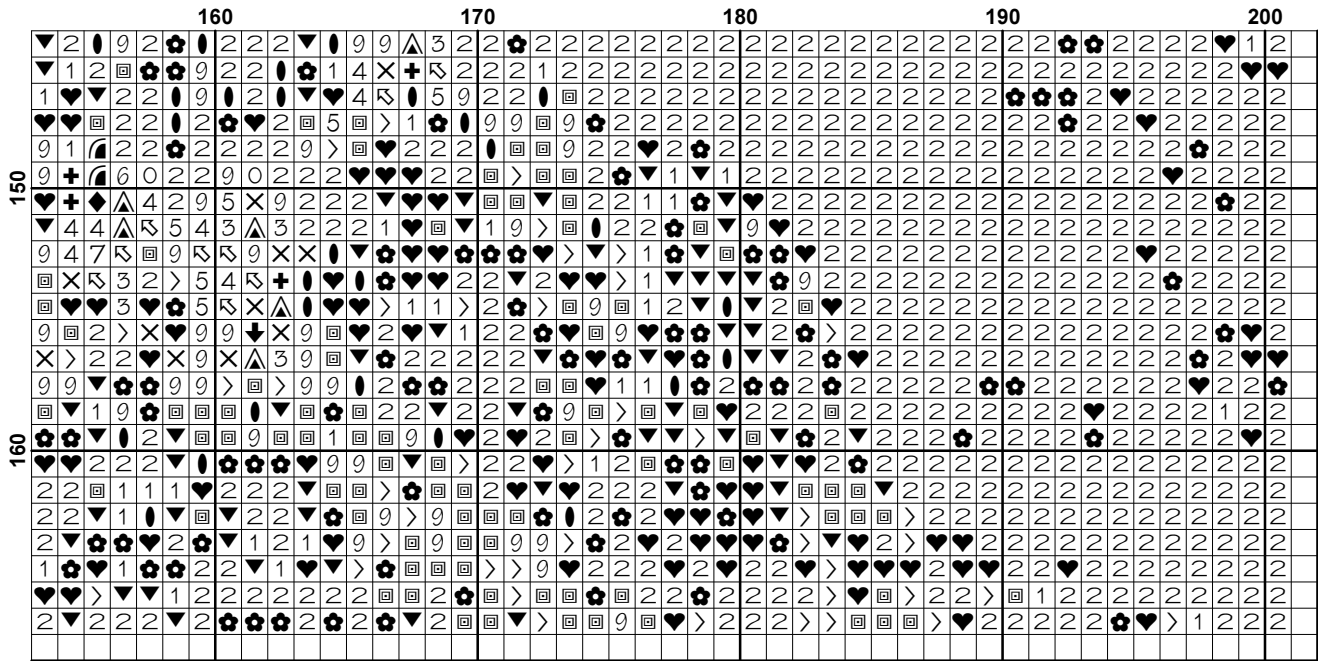

















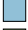




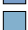



















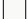


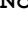







Pattern Name: Castle on Mountain
Designed By: Photo by Photorack
Company: Free Cross Stitch Online
Copyright: Copyright Free Cross Stitch Online. All rights Reserved.
Fabric: Aida 14, White
 200w X 166h Stitches
Size(s): 14 Count, 14-1/4w X 11-3/4h in
 16 Count, 12-1/2w X 10-3/8h in
 18 Count, 11w X 9-1/8h in

Floss Used for Full Stitches:

Symbol	Strands	Type	Number	Color
	//	2	DMC 162	Blue-UL VY LT
	▲	2	DMC 169	Pewter-LT
	2	2	DMC 310	Black
	◆	2	DMC 311	Navy Blue-MD
	X	2	DMC 317	Pewter Gray
	4	2	DMC 318	Steel Gray-LT
	✦	2	DMC 334	Baby Blue-MD
	+	2	DMC 413	Pewter Gray-DK
	3	2	DMC 414	Steel Gray-DK
	▣	2	DMC 469	Avocado Green
	◇	2	DMC 470	Avocado Green-LT
	●	2	DMC 501	Blue Green-DK
	⊕	2	DMC 519	Sky Blue
	●	2	DMC 520	Fern Green-DK
	7	2	DMC 648	Beaver Gray-LT
	✦	2	DMC 762	Pearl Gray-VY LT
	X	2	DMC 775	Baby Blue-VY LT
	≡	2	DMC 799	Delft Blue-MD
	☾	2	DMC 813	Blue-LT
	6	2	DMC 823	Navy Blue-DK
	5	2	DMC 826	Blue-MD
	T	2	DMC 827	Blue-VY LT
	⊗	2	DMC 890	Pistachio Green-UL DK
	1	2	DMC 895	Hunter Green-VY DK
	▼	2	DMC 904	Parrot Green-VY DK
	☞	2	DMC 930	Antique Blue-DK
	♥	2	DMC 934	Black Avocado Green
	>	2	DMC 936	Avocado Green-VY DK
	0	2	DMC 939	Navy Blue-VY DK
	↖	2	DMC 3023	Brown Gray-LT
	8	2	DMC 3024	Brown Gray-VY LT
	a	2	DMC 3072	Beaver Gray-VY LT
	Z	2	DMC 3325	Baby Blue-LT
	9	2	DMC 3346	Hunter Green
	5	2	DMC 3347	Yellow Green-MD
	▣	2	DMC 3750	Antique Blue-VY DK
	★	2	DMC 3755	Baby Blue
	L	2	DMC 3756	Baby Blue-UL VY LT
	⊗	2	DMC 3770	Tawny-VY LT
	↓	2	DMC 3799	Pewter Gray-VY DK
	∞	2	DMC 3865	Winter White

Notes:

You should begin at the centre of the pattern. Follow the arrows at the top and on the left to find the centre. Look in the corners to see the numbers in brackets to put the patterns together.

As the pattern has a few pages, the easiest way to stitch it is to stitch one page at a time.

This pattern is offered totally free from Free Cross Stitch Online. We offer one new free pattern on our website every Friday. Please see www.freecrossstitchonline.com

Please feel free to pass this pattern around to anyone for free. You cannot sell these patterns by themselves, however you can put the pattern together in a kit form and sell the kits with the fabric and floss or you can sell the completed stitched item. You cannot claim the pattern as your own or alter it in anyway and Free Cross Stitch Online will not accept any liability for the sale of kits or completed items.

Also see our other website www.christiancrossstitch.com

Usage Summary

Strands Per Skein: 6

Skein Length: 313.0 in

Type	Number	Full	Half	Quarter	Petite	Back(in)	Str(in)	Spec(in)	French	Bead	Skein Est.
DMC 162	162	512	0	0	0	0.0	0.0	0.0	0	0	1.000
DMC 169	169	198	0	0	0	0.0	0.0	0.0	0	0	1.000
DMC 310	310	6645	0	0	0	0.0	0.0	0.0	0	0	3.000
DMC 311	311	266	0	0	0	0.0	0.0	0.0	0	0	1.000
DMC 317	317	322	0	0	0	0.0	0.0	0.0	0	0	1.000
DMC 318	318	135	0	0	0	0.0	0.0	0.0	0	0	1.000
DMC 334	334	1435	0	0	0	0.0	0.0	0.0	0	0	1.000
DMC 413	413	406	0	0	0	0.0	0.0	0.0	0	0	1.000
DMC 414	414	199	0	0	0	0.0	0.0	0.0	0	0	1.000
DMC 469	469	794	0	0	0	0.0	0.0	0.0	0	0	1.000
DMC 470	470	124	0	0	0	0.0	0.0	0.0	0	0	1.000
DMC 501	501	242	0	0	0	0.0	0.0	0.0	0	0	1.000
DMC 519	519	230	0	0	0	0.0	0.0	0.0	0	0	1.000
DMC 520	520	373	0	0	0	0.0	0.0	0.0	0	0	1.000
DMC 648	648	131	0	0	0	0.0	0.0	0.0	0	0	1.000
DMC 762	762	51	0	0	0	0.0	0.0	0.0	0	0	1.000
DMC 775	775	786	0	0	0	0.0	0.0	0.0	0	0	1.000
DMC 799	799	1823	0	0	0	0.0	0.0	0.0	0	0	1.000
DMC 813	813	3321	0	0	0	0.0	0.0	0.0	0	0	2.000
DMC 823	823	687	0	0	0	0.0	0.0	0.0	0	0	1.000
DMC 826	826	863	0	0	0	0.0	0.0	0.0	0	0	1.000
DMC 827	827	559	0	0	0	0.0	0.0	0.0	0	0	1.000
DMC 890	890	1146	0	0	0	0.0	0.0	0.0	0	0	1.000
DMC 895	895	774	0	0	0	0.0	0.0	0.0	0	0	1.000
DMC 904	904	861	0	0	0	0.0	0.0	0.0	0	0	1.000
DMC 930	930	817	0	0	0	0.0	0.0	0.0	0	0	1.000
DMC 934	934	724	0	0	0	0.0	0.0	0.0	0	0	1.000
DMC 936	936	252	0	0	0	0.0	0.0	0.0	0	0	1.000
DMC 939	939	612	0	0	0	0.0	0.0	0.0	0	0	1.000
DMC 3023	3023	166	0	0	0	0.0	0.0	0.0	0	0	1.000
DMC 3024	3024	92	0	0	0	0.0	0.0	0.0	0	0	1.000
DMC 3072	3072	90	0	0	0	0.0	0.0	0.0	0	0	1.000
DMC 3325	3325	455	0	0	0	0.0	0.0	0.0	0	0	1.000
DMC 3346	3346	649	0	0	0	0.0	0.0	0.0	0	0	1.000
DMC 3347	3347	150	0	0	0	0.0	0.0	0.0	0	0	1.000
DMC 3750	3750	881	0	0	0	0.0	0.0	0.0	0	0	1.000
DMC 3755	3755	640	0	0	0	0.0	0.0	0.0	0	0	1.000
DMC 3756	3756	2149	0	0	0	0.0	0.0	0.0	0	0	1.000
DMC 3770	3770	109	0	0	0	0.0	0.0	0.0	0	0	1.000
DMC 3799	3799	162	0	0	0	0.0	0.0	0.0	0	0	1.000
DMC 3865	3865	2369	0	0	0	0.0	0.0	0.0	0	0	2.000