

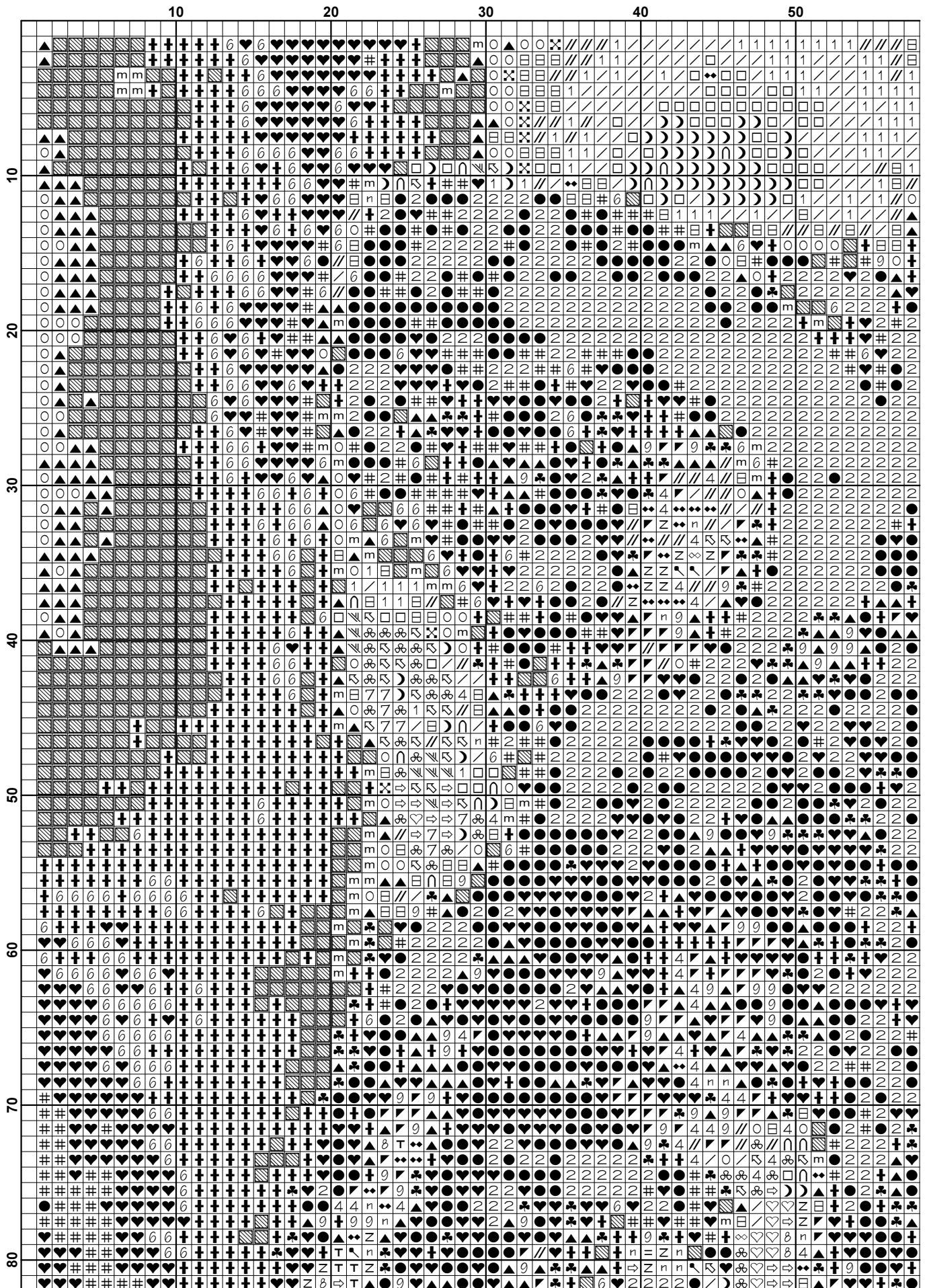
# Wolf

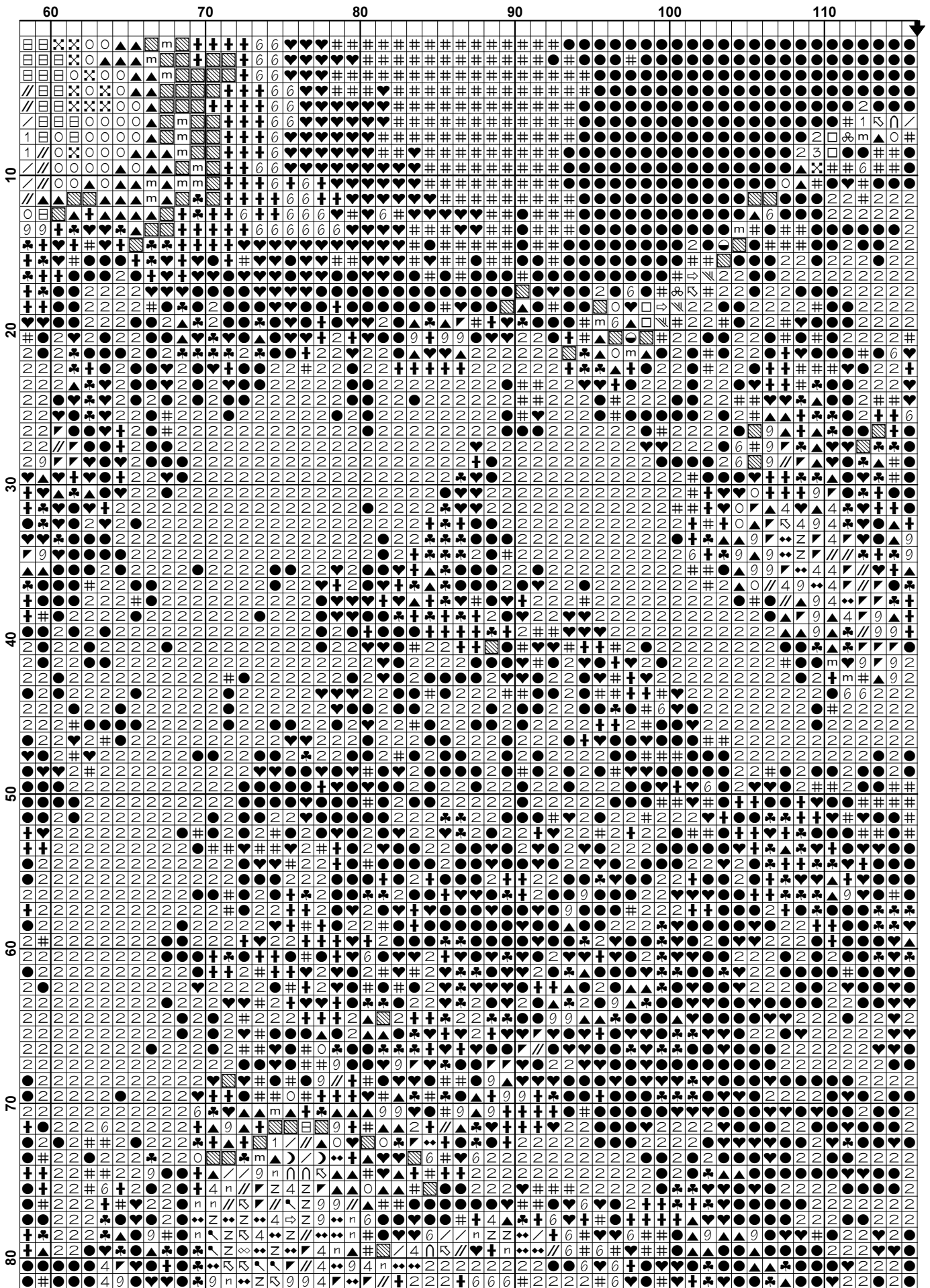
[www.freecrossstitchonline.com](http://www.freecrossstitchonline.com)

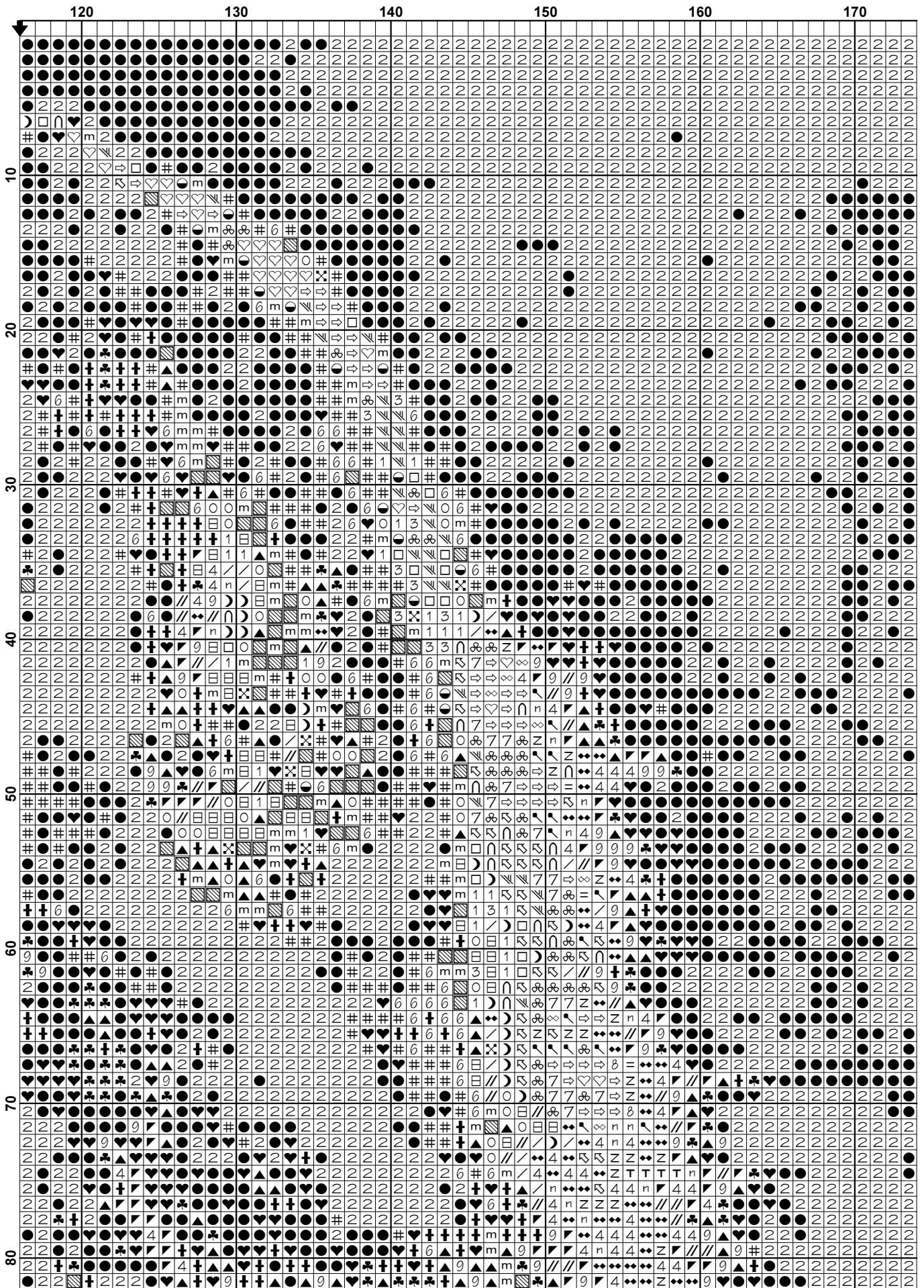


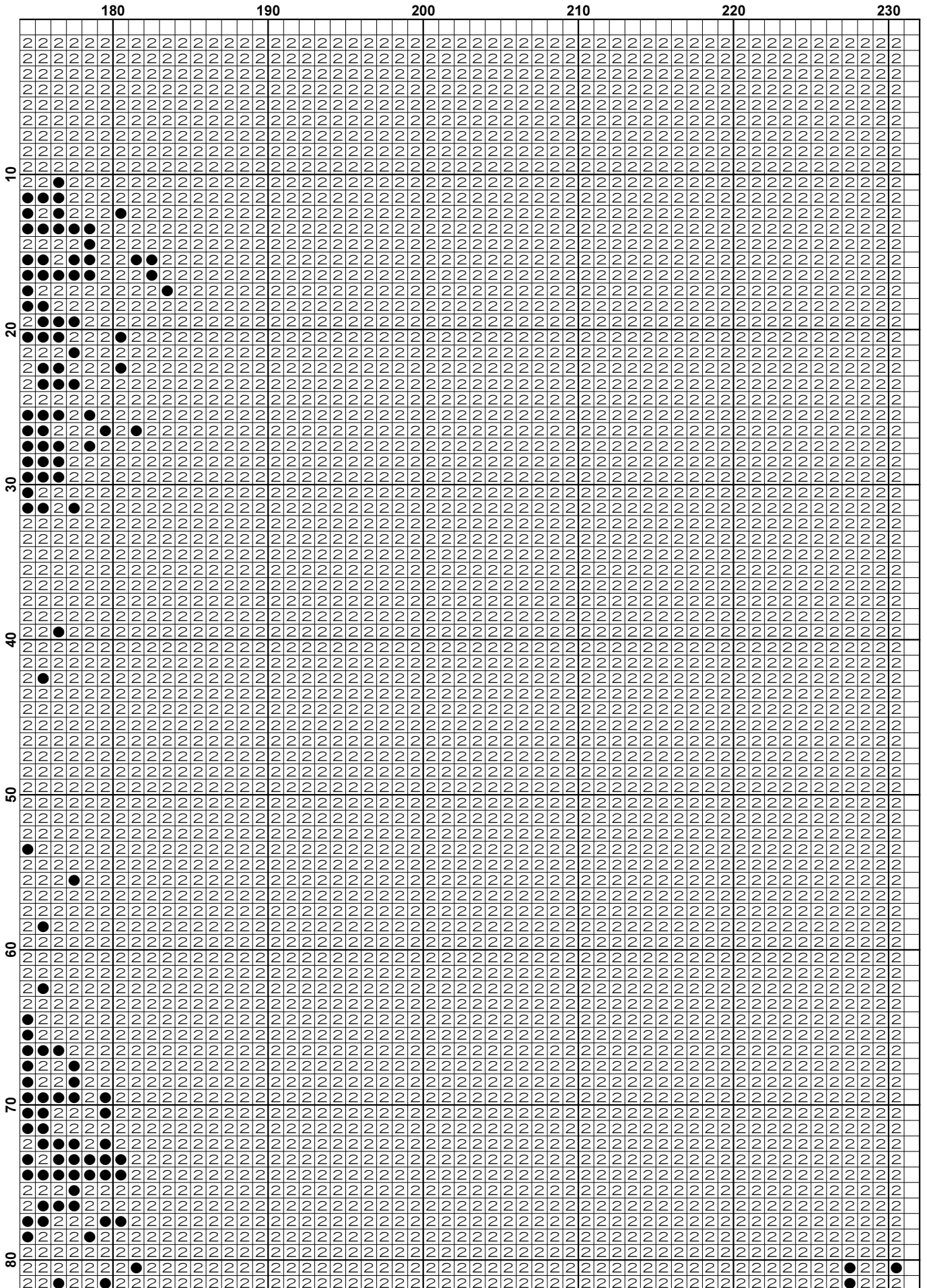
This pattern is offered totally free from Free Cross Stitch Online. We offer one new free pattern on our website every Friday. Please see [www.freecrossstitchonline.com](http://www.freecrossstitchonline.com).

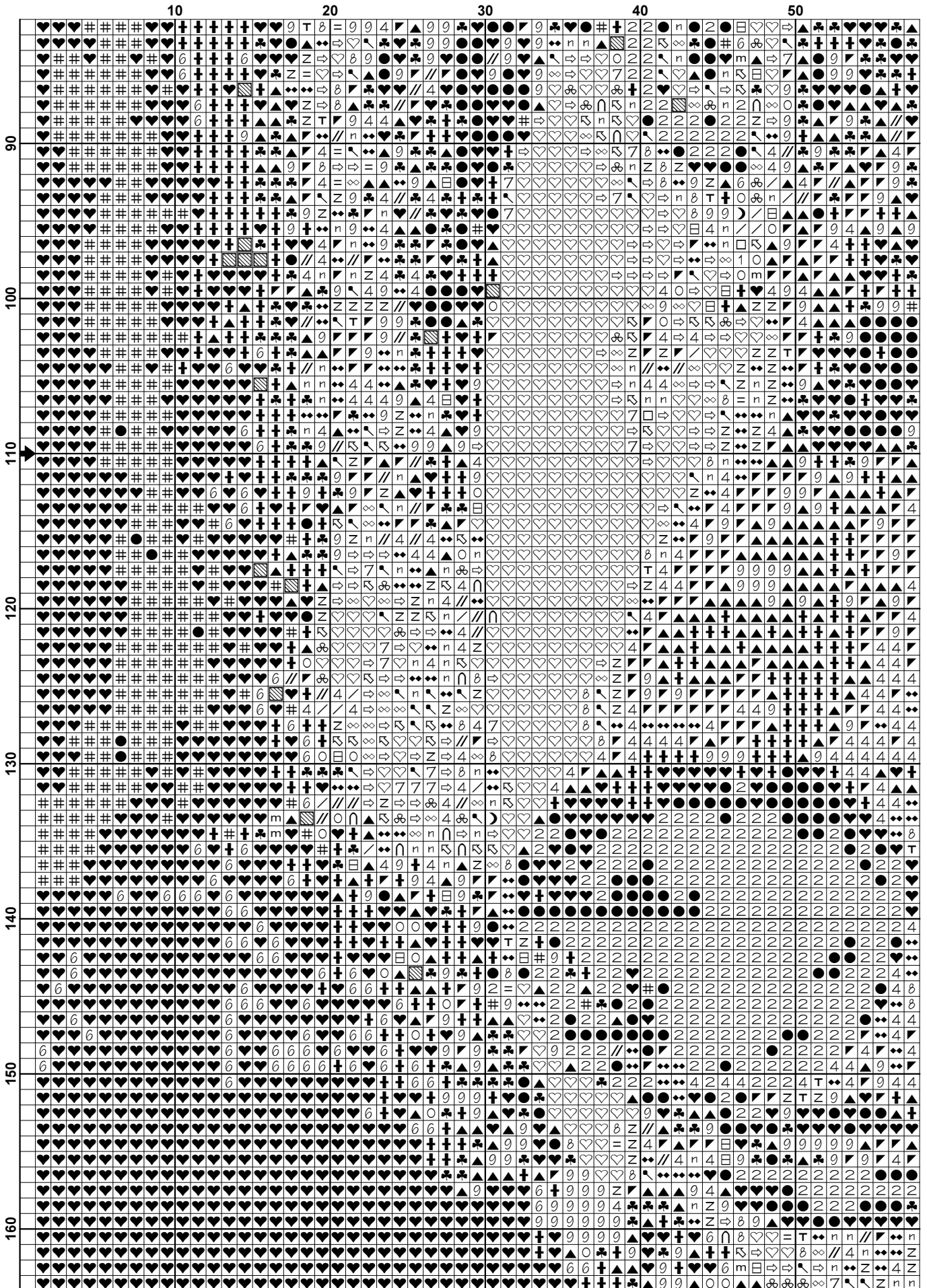
Please feel free to pass this pattern around to anyone for free. You cannot sell these patterns by themselves, however you can put the pattern together in a kit form and sell the kits or you can sell the completed stitched item.



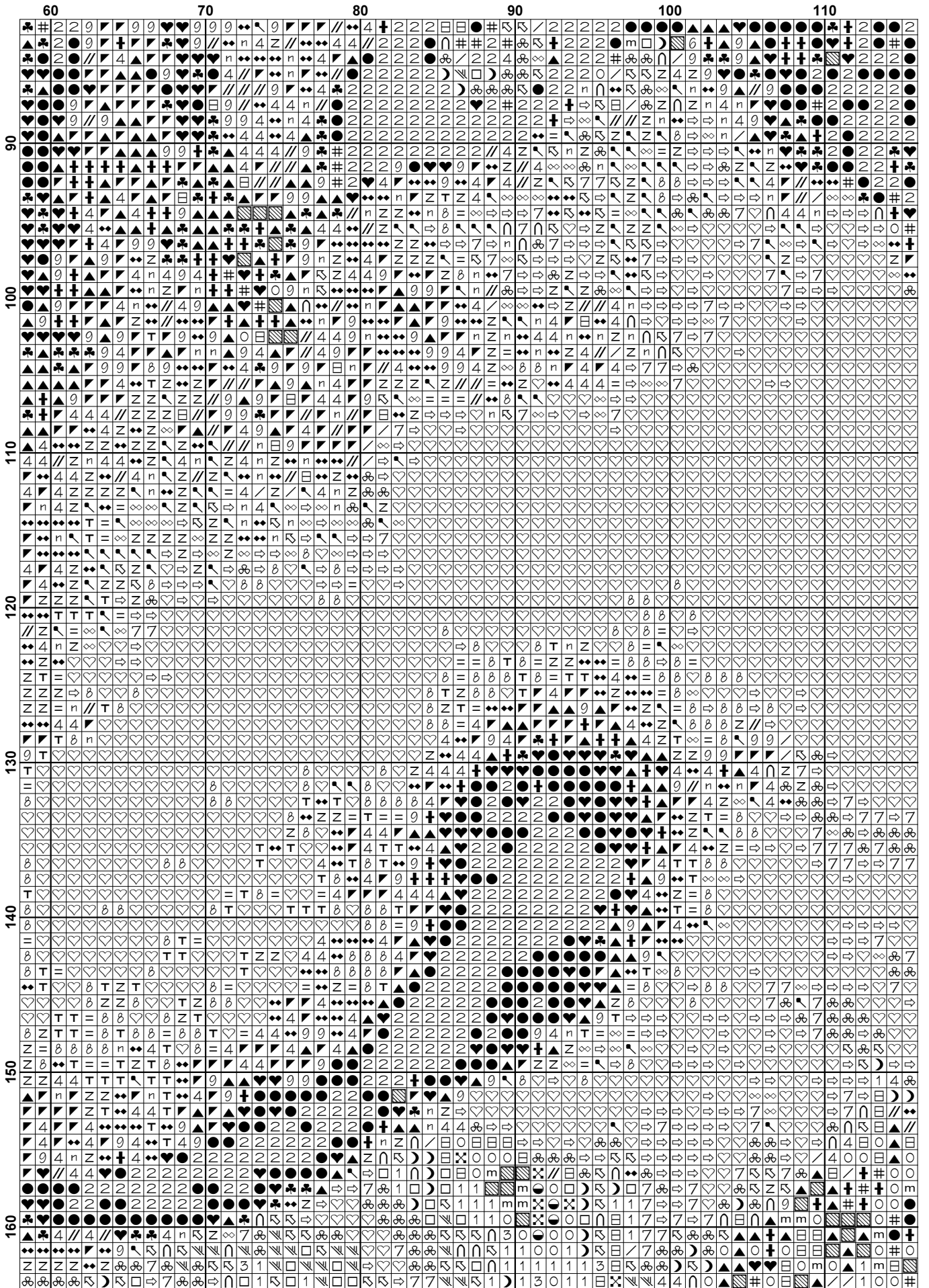


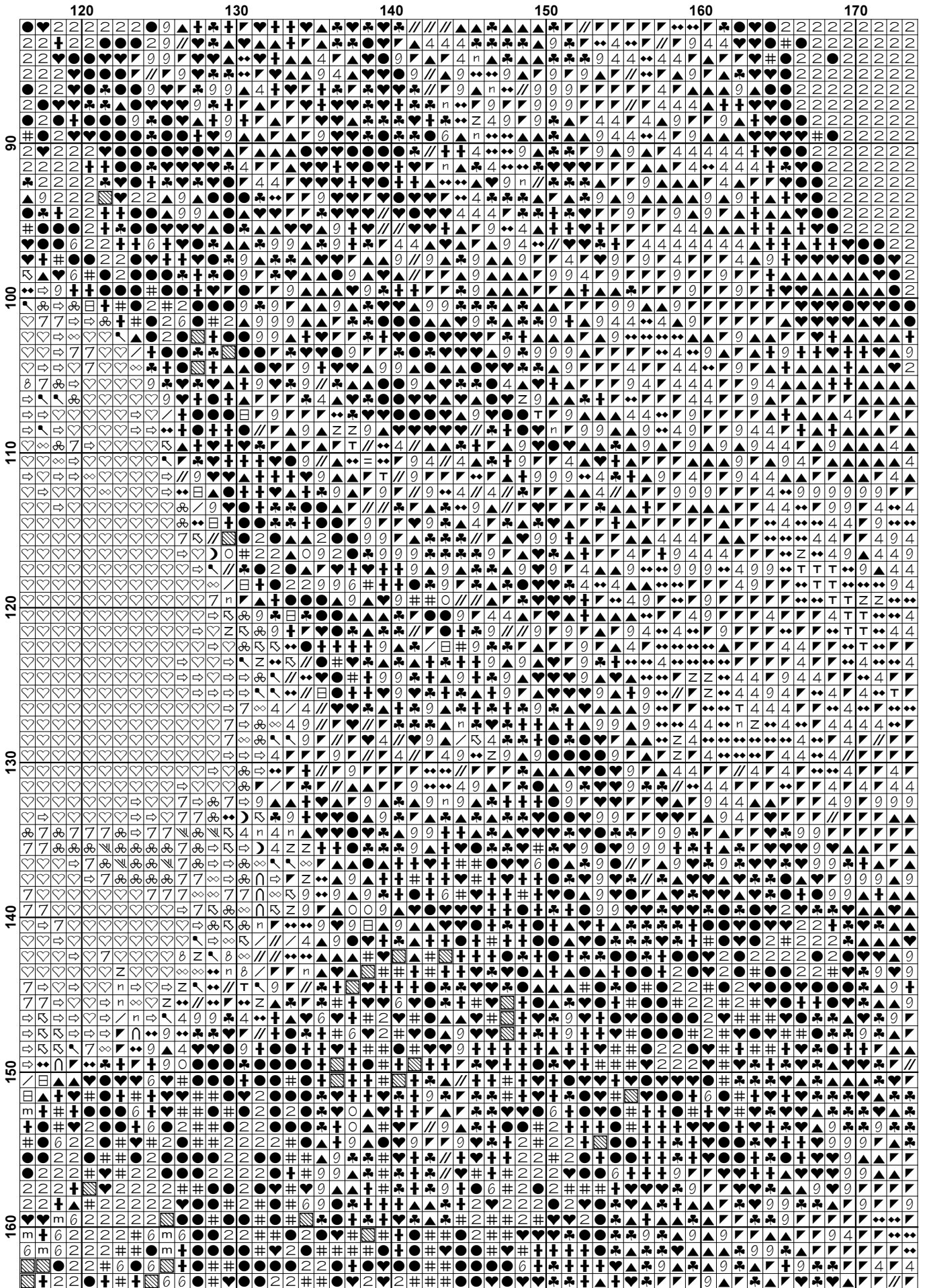




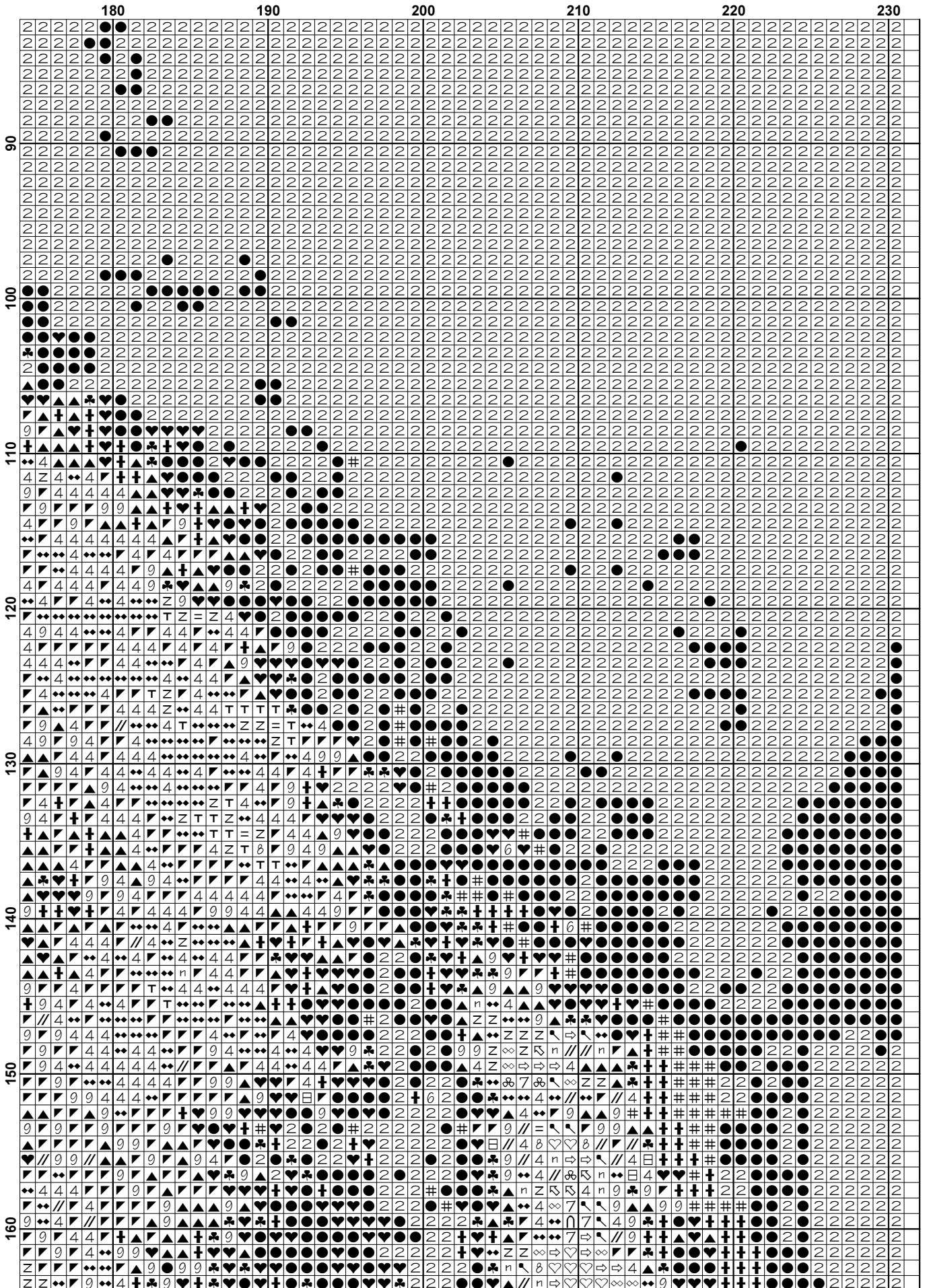


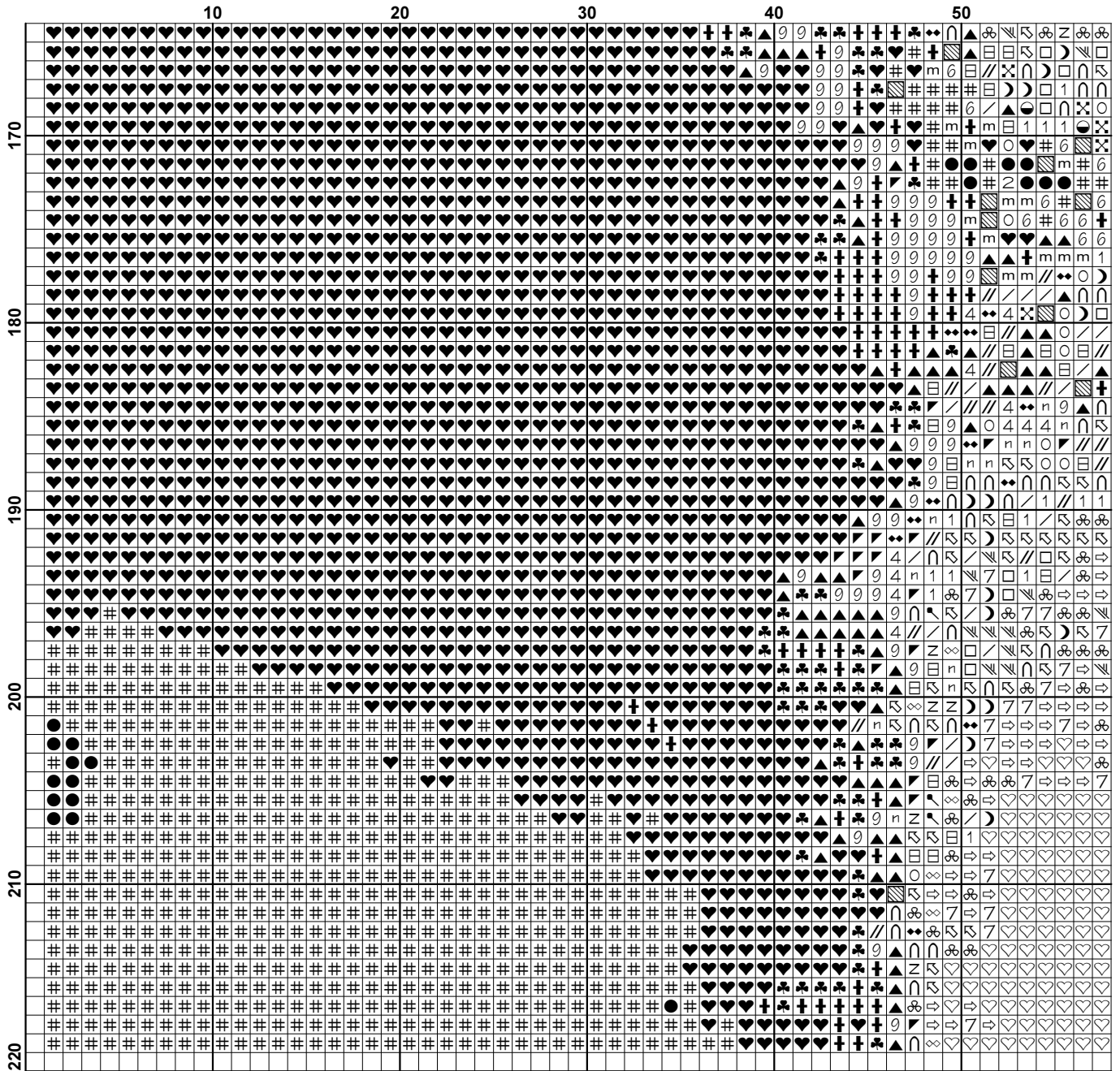




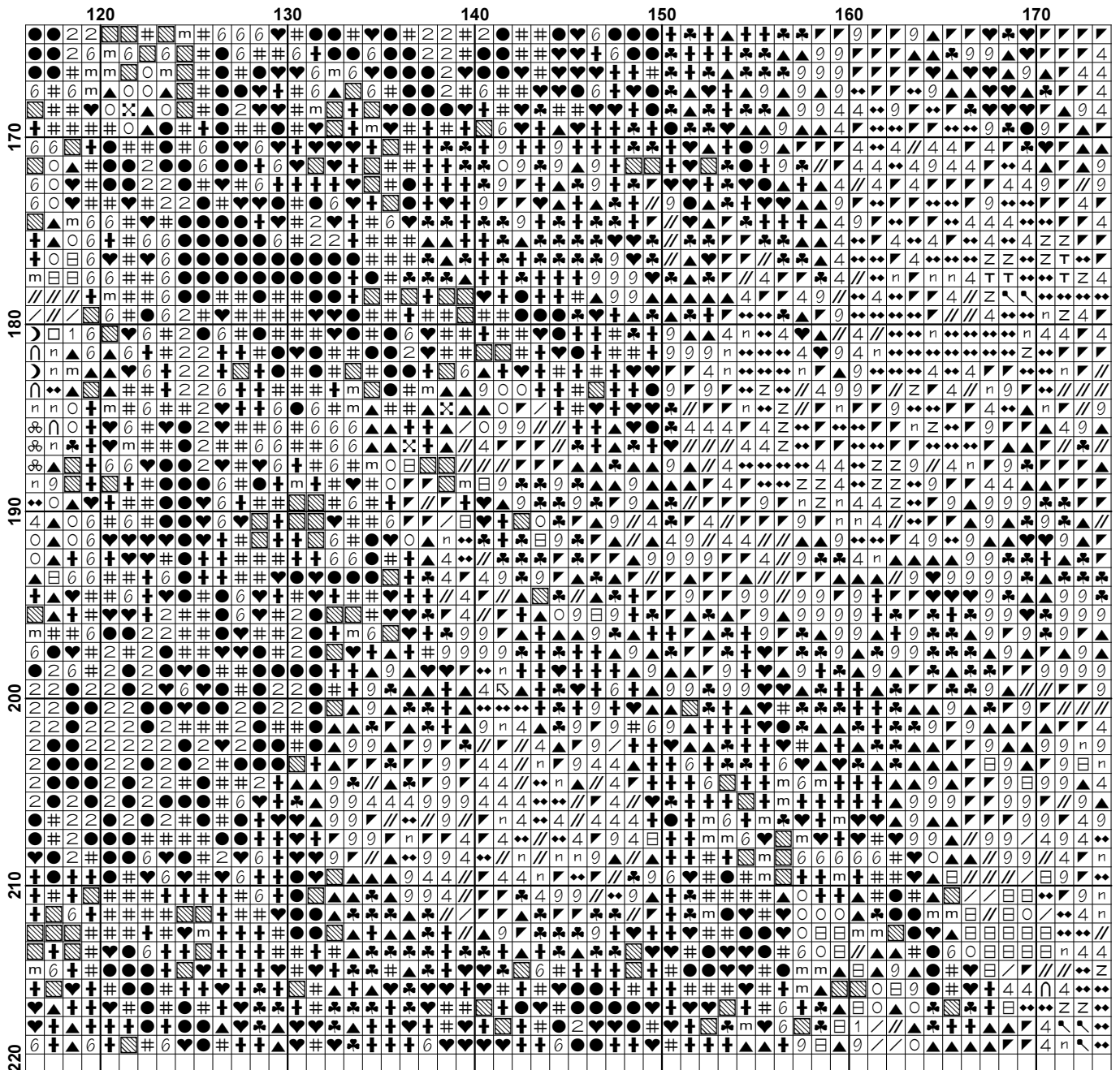


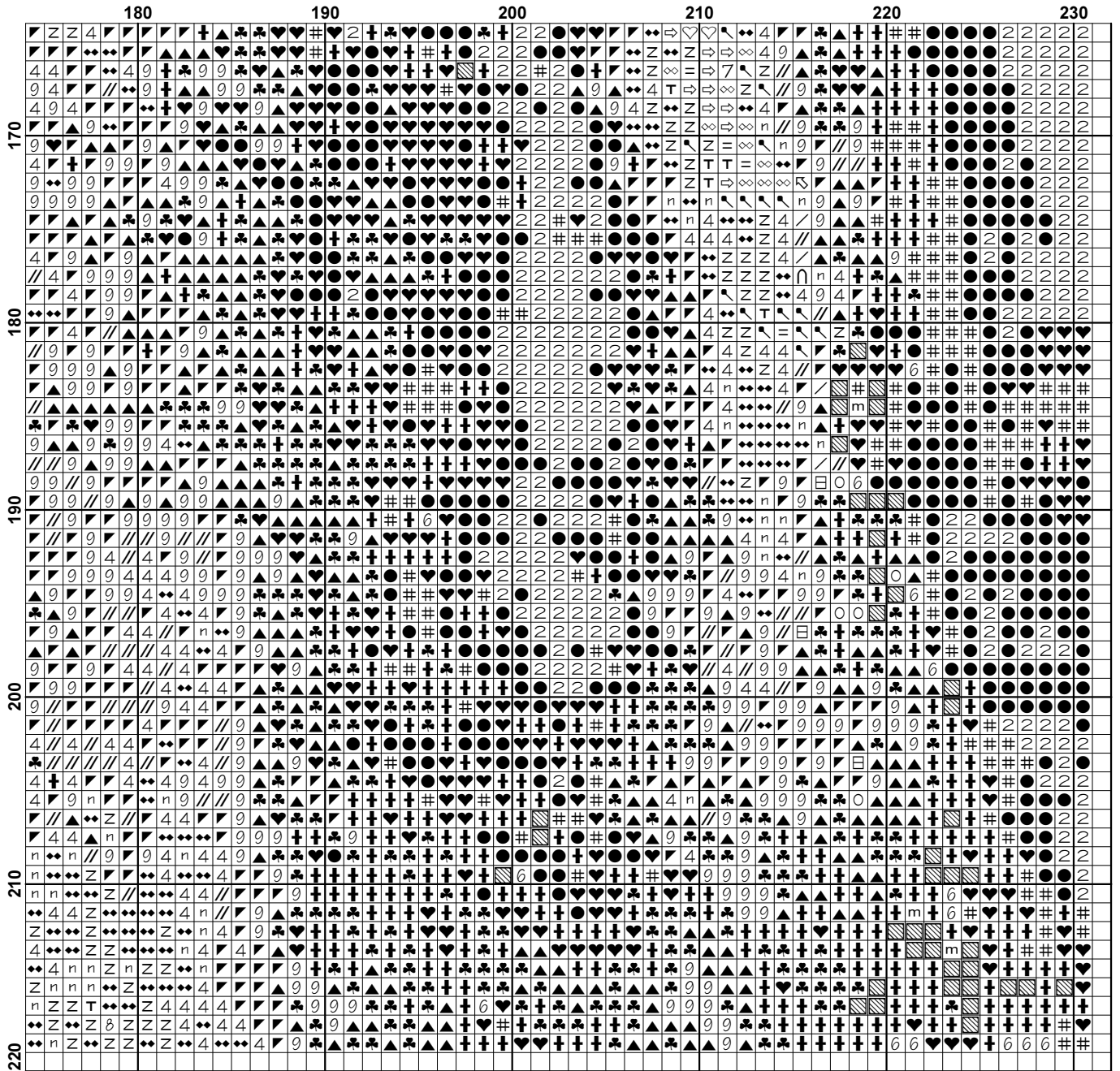






	60	70	80	90	100	110
170	...	...	...	...	...	...
180	...	...	...	...	...	...
190	...	...	...	...	...	...
200	...	...	...	...	...	...
210	...	...	...	...	...	...
220	...	...	...	...	...	...





**Pattern Name:** Wolf  
**Designed By:** www.freecrossstitchonline.com  
**Company:** Free Cross Stitch Online  
**Copyright:** Copyright Free Cross Stitch Online. All rights Reserved.  
**Fabric:** Aida 14, White  
 230w X 218h Stitches  
**Size(s):** 14 Count, 16-3/8w X 15-1/2h in  
 16 Count, 14-3/8w X 13-5/8h in  
 18 Count, 12-3/4w X 12h in

**Floss Used for Full Stitches:**

Symbol	Strands	Type	Number	Color
■	2	DMC	310	Black
■	∞	DMC	543	Beige Brown-UL VY LT
■	∩	DMC	613	Drab Brown-VY LT
■	⊞	DMC	640	Beige Gray-VY DK
■	/	DMC	642	Beige Gray-DK
■	9	DMC	645	Beaver Gray-VY DK
■	▼	DMC	646	Beaver Gray-DK
■	4	DMC	647	Beaver Gray-MD
■	◆	DMC	648	Beaver Gray-LT
■	8	DMC	712	Cream
■	∞	DMC	822	Beige Gray-LT
■	6	DMC	838	Beige Brown-VY DK
■	m	DMC	839	Beige Brown-DK
■	✕	DMC	840	Beige Brown-MD
■	1	DMC	841	Beige Brown-LT
■	⊞	DMC	842	Beige Brown-VY LT
■	♣	DMC	844	Beaver Brown-UL DK
■	#	DMC	938	Coffee Brown-UL DK
■	7	DMC	948	Peach-VY LT
■	†	DMC	3021	Brown Gray-VY DK
■	//	DMC	3022	Brown Gray-MD
■	n	DMC	3023	Brown Gray-LT
■	z	DMC	3024	Brown Gray-VY LT
■	♥	DMC	3031	Mocha Brown-VY DK
■	↵	DMC	3033	Mocha Brown-VY LT
■	T	DMC	3072	Beaver Gray-VY LT
■	●	DMC	3371	Black Brown
■	⇄	DMC	3770	Tawny-VY LT
■	⚡	DMC	3774	Desert Sand-VY LT
■	▨	DMC	3781	Mocha Brown-DK
■	☾	DMC	3782	Mocha Brown-LT
■	▲	DMC	3787	Brown Gray-DK
■	0	DMC	3790	Beige Gray-UL DK
■	●	DMC	3862	Mocha Beige-DK
■	3	DMC	3863	Mocha Beige-MD
■	□	DMC	3864	Mocha Beige-LT
■	♡	DMC	3865	Winter White
■	=	DMC	3866	Mocha Brown-UL VY LT

**Notes:**

You should begin at the centre of the pattern. Follow the arrows at the top and on the left to find the centre. Look in the corners to see the numbers in brackets to put the patterns together.

As the pattern has a few pages, the easiest way to stitch it is to stitch one page at a time.

Copyright Free Cross Stitch Online. All rights Reserved.

This pattern is offered totally free from Free Cross Stitch Online. We offer one new free pattern on our website every Friday. Please see [www.freecrossstitchonline.com](http://www.freecrossstitchonline.com).

Please feel free to pass this pattern around to anyone for free. You cannot sell these patterns by themselves, however you can put the pattern together in a kit form and sell the kits or you can sell the completed stitched item.



**Usage Summary****Strands Per Skein:** 6**Skein Length:** 313.0 in

Type	Number	Full	Half	Quarter	Petite	Back(in)	Str(in)	Spec(in)	French	Bead	Skein Est.
■ DMC	310	12203	0	0	0	0.0	0.0	0.0	0	0	6.000
■ DMC	543	448	0	0	0	0.0	0.0	0.0	0	0	1.000
■ DMC	613	240	0	0	0	0.0	0.0	0.0	0	0	1.000
■ DMC	640	460	0	0	0	0.0	0.0	0.0	0	0	1.000
■ DMC	642	331	0	0	0	0.0	0.0	0.0	0	0	1.000
■ DMC	645	1434	0	0	0	0.0	0.0	0.0	0	0	1.000
■ DMC	646	1961	0	0	0	0.0	0.0	0.0	0	0	1.000
■ DMC	647	1116	0	0	0	0.0	0.0	0.0	0	0	1.000
■ DMC	648	1055	0	0	0	0.0	0.0	0.0	0	0	1.000
■ DMC	712	193	0	0	0	0.0	0.0	0.0	0	0	1.000
■ DMC	822	170	0	0	0	0.0	0.0	0.0	0	0	1.000
■ DMC	838	668	0	0	0	0.0	0.0	0.0	0	0	1.000
■ DMC	839	289	0	0	0	0.0	0.0	0.0	0	0	1.000
■ DMC	840	171	0	0	0	0.0	0.0	0.0	0	0	1.000
■ DMC	841	489	0	0	0	0.0	0.0	0.0	0	0	1.000
■ DMC	842	445	0	0	0	0.0	0.0	0.0	0	0	1.000
■ DMC	844	1640	0	0	0	0.0	0.0	0.0	0	0	1.000
■ DMC	938	2544	0	0	0	0.0	0.0	0.0	0	0	2.000
■ DMC	948	267	0	0	0	0.0	0.0	0.0	0	0	1.000
■ DMC	3021	2937	0	0	0	0.0	0.0	0.0	0	0	2.000
■ DMC	3022	561	0	0	0	0.0	0.0	0.0	0	0	1.000
■ DMC	3023	331	0	0	0	0.0	0.0	0.0	0	0	1.000
■ DMC	3024	441	0	0	0	0.0	0.0	0.0	0	0	1.000
■ DMC	3031	5600	0	0	0	0.0	0.0	0.0	0	0	3.000
■ DMC	3033	238	0	0	0	0.0	0.0	0.0	0	0	1.000
■ DMC	3072	148	0	0	0	0.0	0.0	0.0	0	0	1.000
■ DMC	3371	5362	0	0	0	0.0	0.0	0.0	0	0	3.000
■ DMC	3770	709	0	0	0	0.0	0.0	0.0	0	0	1.000
■ DMC	3774	254	0	0	0	0.0	0.0	0.0	0	0	1.000
■ DMC	3781	1042	0	0	0	0.0	0.0	0.0	0	0	1.000
■ DMC	3782	261	0	0	0	0.0	0.0	0.0	0	0	1.000
■ DMC	3787	2507	0	0	0	0.0	0.0	0.0	0	0	2.000
■ DMC	3790	520	0	0	0	0.0	0.0	0.0	0	0	1.000
■ DMC	3862	70	0	0	0	0.0	0.0	0.0	0	0	1.000
■ DMC	3863	150	0	0	0	0.0	0.0	0.0	0	0	1.000
■ DMC	3864	325	0	0	0	0.0	0.0	0.0	0	0	1.000
■ DMC	3865	2473	0	0	0	0.0	0.0	0.0	0	0	2.000
■ DMC	3866	87	0	0	0	0.0	0.0	0.0	0	0	1.000